



## Speculative Pressure

John Hua, Adrian Fernandez-Perez, Ana-Maria Fuertes, Joelle Miffre

### ► To cite this version:

John Hua, Adrian Fernandez-Perez, Ana-Maria Fuertes, Joelle Miffre. Speculative Pressure. Journal of Futures Markets, 2020. hal-02500777

**HAL Id: hal-02500777**

**<https://audencia.hal.science/hal-02500777>**

Submitted on 6 Mar 2020

**HAL** is a multi-disciplinary open access archive for the deposit and dissemination of scientific research documents, whether they are published or not. The documents may come from teaching and research institutions in France or abroad, or from public or private research centers.

L'archive ouverte pluridisciplinaire **HAL**, est destinée au dépôt et à la diffusion de documents scientifiques de niveau recherche, publiés ou non, émanant des établissements d'enseignement et de recherche français ou étrangers, des laboratoires publics ou privés.

# Speculative Pressure

**John Hua Fan<sup>†</sup>, Adrian Fernandez-Perez<sup>‡</sup>, Ana-Maria Fuertes<sup>§</sup> and Joëlle Miffre<sup>¶</sup>**

## Abstract

The paper investigates the information content of speculative pressure across futures classes. Long-short portfolios of futures contracts sorted by speculative pressure capture a significant premium in commodity, currency and equity markets but not in fixed income markets. Exposure to commodity, currency and equity index futures' speculative pressure is priced in the broad cross-section after controlling for momentum, carry, global liquidity and volatility risks. The findings are confirmed by robustness tests using alternative speculative pressure signals, portfolio construction techniques and subsamples inter alia. We argue that there is an efficient hedgers-speculators risk transfer in commodity, currency and equity index futures markets.

*JEL classifications:* G13, G14

*Keywords:* Speculative pressure, Risk premium, Pricing, Futures markets

*This version:* August 2019

---

<sup>†</sup> Senior Lecturer in Finance, Griffith Business School, Griffith University. 170 Kessels Road, Brisbane, Australia; Tel + 61 (0)7 3735 4638; e-mail: j.fan@griffith.edu.au

<sup>‡</sup> Research Fellow, Auckland University of Technology, Private Bag 92006, 1142 Auckland, New Zealand; Tel: +64 9 921 9999; e-mail: adrian.fernandez@aut.ac.nz. Corresponding author

<sup>§</sup> Professor of Finance and Econometrics, Cass Business School, City University of London, ECIY 8TZ, United Kingdom; Tel: +44 (0)20 7040 0186; e-mail: a.fuertes@city.ac.uk

<sup>¶</sup> Professor of Finance, Audencia Business School, 8 Route de la Jonelière, 44312, Nantes, France; Tel: +33 (0)2 40 37 34 34; e-mail: jmiffre@audencia.com

We gratefully acknowledge financial support from Europlace Institute of Finance, Institut Louis Bachelier and Griffith Centre for Personal Finance and Superannuation. Parts of the paper were completed while J. Fan was visiting Audencia Business School. We would like to thank the Editor, Robert Webb, an anonymous referee, as well as D. Basu, D. Kuruppuarachchi, H. Till, R. Zhang (data collection), and participants at a research seminar at University College Dublin and at the following conferences: INFINITI 2018, Derivative Markets Conference 2018, PANORisk conference 2018 and Australasian Commodity Markets Conference 2019.

## 1. Introduction

A well-established theory on commodity futures pricing hinges on the hedging pressure hypothesis of Cootner (1960) and Hirshleifer (1988).<sup>1</sup> The key contention of this ‘insurance mechanism’ theory is that the prices of commodity futures are driven by the net positions of hedgers and speculators. When hedgers are net short, futures prices are low relative to their expected values at maturity to entice net long speculation, a market condition known as *backwardation*. When hedgers are net long, futures prices are high relative to their expected values at maturity to induce net short speculation, which is known as *contango*. Accordingly, by taking opposite positions to those of hedgers, speculators earn a premium as compensation for bearing the price risk of hedgers.

The theoretical motivation for the hedging pressure hypothesis is largely confined to commodities, however, it is possible that speculative (hedging) pressure influences the price formation process in other futures markets. Firms that issue and invest in foreign currency-denominated securities or that engage in cross-border trades typically want to hedge their foreign exchange exposure. Likewise, ahead of an anticipated market fluctuation, fixed income and equity managers may want to tactically hedge their spot exposure by taking an opposite position in futures markets. Asset managers and index providers may need to hedge their products in the face of customers’ early redemptions. In all these financial futures markets too, speculators may claim a premium as insurance suppliers. Using as signal the past net long positions of large non-commercial participants over their total positions (*speculative pressure* signal, hereafter), we test this conjecture

---

<sup>1</sup> The hedging pressure hypothesis generalizes the normal backwardation theory of Keynes (1930) and Hicks (1939). Normal backwardation argues that hedgers are normally net short as commodity producers are more prone to hedge their price risk than commodity consumers.

by conducting empirical tests of whether speculators receive a premium for shouldering the price risk of hedgers in commodity, currency, equity index and fixed income futures markets.

For this purpose, we begin by constructing fully-collateralized portfolios that take long (short) positions in the futures with the most positive (negative) speculative pressure. To our best knowledge, no other paper in the literature studies the performance and risk profile of long-short speculative pressure portfolios in futures markets for instruments beyond commodities. Thus, we extend the portfolio study of Basu and Miffre (2013) to currency, equity and fixed income futures markets. We investigate the nature of the speculative pressure risk premium thus captured in the context of ‘everywhere’ tradeable factors based on general market movements – the momentum and value factors documented in Asness et al. (2013) and the carry factor of Kojen et al. (2018). Next, we seek to understand the drivers of the speculative pressure risk premia across futures classes by testing for the presence of a common structure. Finally, we address the question of whether exposure to the class-specific and ‘everywhere’ speculative pressure factor is priced in the broad cross-section of futures returns, while controlling for various (non-)tradeable factors.

The findings suggest that an efficient risk transfer mechanism from hedgers to speculators is at play not only in commodity futures markets but also in currency and equity futures markets. The long-short portfolio analysis reveals that speculators in these markets earn statistically significant mean excess returns that range from 2.51% to 4.12% per annum as a reward for providing price risk insurance to hedgers. The cross-sectional pricing analysis reveals that the speculative pressure risk factors constructed either, individually, within each commodity, currency and equity index futures market or jointly across markets (‘everywhere’ speculative pressure factor) can explain the broad cross-section of futures returns across classes after controlling for the corresponding class-specific or ‘everywhere’ tradeable momentum, value and carry factors, and non-tradeable macroeconomic,

global liquidity and volatility risks. The findings are not driven by transaction costs or illiquidity and remain robust also to the consideration of alternative speculative pressure signals, portfolio construction techniques, ranking and holding periods and sub-periods.

In sharp contrast, we find no evidence of a significant speculative pressure premium in the interest rate and fixed income futures markets. Thus, albeit from the lens of different research questions, our paper reaffirms Bessembinder (1992) and Moskowitz et al. (2012) in establishing that fixed income futures markets behave differently from other futures markets as regards the information content of the net positions of hedgers or speculators.<sup>2</sup> A hedgers-to-speculators risk transfer in fixed income futures markets would be obscured if agents choose to hedge their interest rate risk with other strategies (i.e. immunization, temporary change in modified duration).

The article contributes to the literature in three ways. First, to our knowledge, it provides the first empirical investigation of the ability of tradeable long-short portfolios based on speculative pressure to capture premia in futures markets on instruments beyond commodities. In so doing, we add to Bessembinder (1992) and de Roon et al. (2000) who also study the pricing of hedging or speculative pressure in various futures markets. However, unlike us, they do not assess the extent to which it is possible to capture a premium through long-short speculative pressure portfolios.<sup>3</sup>

---

<sup>2</sup> Bessembinder (1992) finds that residual risk conditioned on net hedging or speculative positions has strong cross-sectional explanatory power for agricultural and currency futures returns, while Moskowitz et al. (2012) document a relatively weak nexus between net speculative positions and time-series momentum in fixed income futures markets. In a different vein, the carry study across futures markets in Kojen et al. (2018) also documents weaker results for fixed income instruments.

<sup>3</sup> Another difference pertains to the sample. On the one hand, the broad cross-section of futures markets that we examine ( $N = 84$ ) compared to the 22 contracts in Bessembinder (1992) and 20 contracts in de Roon et al. (2000), should enable firmer evidence on the hedging pressure hypothesis. On the other hand, the time span from 1993 until 2018 includes recent important landmarks which should enable also robust evidence on the hedging pressure hypothesis.

This portfolio analysis facilitates fresh evidence to inform an ongoing debate on whether hedging pressure and its corollary, speculative pressure, matter to the pricing of commodity futures.<sup>4</sup> It also allows us to go a step further by addressing for the first time the same question via a long-short portfolio analysis for three distinct cross-sections of financial futures contracts.

Second, by studying the cross-market performance of speculative pressure portfolios, we contribute to an ‘everywhere’ pricing literature that has thus far focused on the momentum, value and carry factors<sup>5</sup> and address the question of whether there are common driving factors behind the identified speculative pressure premia. Thus, our empirical analysis is useful not only in terms of asset pricing across futures classes, but also to market participants interested in designing practical investment solutions that are the same across classes.

Finally, our research adds to a literature that investigates the potentially harmful impact of speculators on futures prices (Irwin et al., 2009; Stoll and Whaley, 2010; Fattouh et al., 2013). Finding that equity index, currency and commodity futures markets facilitate risk transfer and reward suggests that calls to regulate excessive speculation are unwarranted; speculators do not destabilize these futures markets, rather they are important providers of liquidity and risk bearing facility to hedgers. Vice versa, our finding that the fundamental risk transfer mechanism is insignificant in fixed income futures markets could call for increased monitoring of the positions

---

<sup>4</sup> A *positive* relation between the net short (long) positions of hedgers (speculators) and commodity futures returns has been documented by Cootner (1960, 1967), Chang (1985), Hirshleifer (1988, 1989), Bessembinder (1992), de Roon et al. (2000), Dewally et al. (2013), and Basu and Miffre (2013), whereas in sharp contrast, Rouwenhorst and Tang (2012), Gorton et al. (2013), Daskalaki et al. (2014), and Szymanowska et al. (2014) find no evidence of a significant relation.

<sup>5</sup> The so-called ‘everywhere’ literature suggests that a given asset characteristic has time-series and/or cross-sectional pricing ability across asset classes; e.g., the *momentum* and *value* as documented in Asness et al. (2013), and the *carry* or *basis* established by Koijen et al. (2018).

of market participants, in particular when it comes to verifying the accuracy of the classification between hedgers and speculators.

The rest of the article unfolds as follows. Section 2 presents the speculative pressure signal and the data. Sections 3 and 4 describe the time-series and cross-sectional tests and the corresponding results. Section 5 implements a battery of robustness checks and finally, Section 6 concludes.

## 2. Speculative Pressure Signal and Data

We measure the *speculative pressure* of each futures contract  $i = 1, \dots, N$  at each month end  $t$  as the average of past weekly net positions of speculators relative to their total positions. Formally

$$SP_{i,t} = \frac{1}{W} \sum_{w=1}^W \frac{L_{i,w} - S_{i,w}}{L_{i,w} + S_{i,w}} \quad (1)$$

where  $L_{i,w}$  and  $S_{i,w}$  are the week  $w$  long and short open interest of large non-commercial traders (also known as speculators) on the  $i$ th futures contract, and  $W$  is the length (in weeks) of the lookback window; we use  $W = 52$  (yearly window) for the reasons given next. The futures price is expected to rise as maturity approaches in a *backwardated* market, that is, when  $SP_{i,t} > 0$ , to reward net long speculators for providing insurance to net short hedgers. Vice versa, the futures price is expected to fall with maturity when the market is in contango ( $SP_{i,t} < 0$ ) to reward speculators for being net short in order to accommodate net long hedging demands.

The choice of a relatively long (one year) lookback window to measure the signal should allow us to capture the long-run, smooth fluctuations in the supply and demand of commodities, currencies, equity indices and fixed income securities that are related to production and business cycles. These smooth fluctuations, in turn, trigger slow variations in hedging demand and, consequently, slow variations in speculative supply. Motivated by the evidence provided by Kang et al. (2019) in the

context of commodity futures, the choice of a yearly lookback period may also help mitigate the noise associated with the short-term liquidity demands of ‘impatient’ speculators that induce variations in the positions of market participants that are unrelated to hedging pressure.

Open interest data for each futures contract is required to measure the  $SP_{i,t}$  signal in Equation (1). We use the weekly open interest of large non-commercial traders as compiled by the Commodity Futures Trading Commission (CFTC) in its Futures-Only Legacy Commitments of Traders (COT) report. The cross section of 84 futures contracts (43 commodities, 11 currencies, 19 equity indices and 11 fixed income and interest rates) and time period covered by our sample (from September 30, 1992 to May 25, 2018) are dictated by the availability of CFTC open interest data.

The empirical analysis requires also the daily settlement prices of each futures contract which we obtain from *Thomson Reuters Datastream*. We measure futures returns as the logarithmic price changes of the front-end contracts up to one month before maturity; the positions are then rolled to the second-nearest contract. As the CFTC compiles the traders’ positions Tuesdays and publish them the following Friday, we cautiously match the Friday announcements with subsequent futures prices changes, i.e., we consider the release date as the date of the traders’ positions.

[Insert Table 1 around here]

Table 1 reports per asset the mean and standard deviation of excess returns and speculative pressure measured at each sample month-end,  $SP_{i,t}$ , from Equation (1). These summary statistics reveal large heterogeneity particularly within asset classes. The table also shows the frequency with which speculators are net long; that is, the percentage of sample months when  $SP_{i,t} > 0$ . These frequencies suggest that there is a slight propensity for futures markets to be in backwardation; namely, we observe that  $SP_{i,t} > 0$  in 71%, 65%, 60% and 52% of the sample months on average



for commodity, currency, equity index and fixed income futures, respectively. This summary statistics confirm that large speculators (generally, investment banks, hedge funds, CTAs) are, typically net long while large hedgers are typically net short. However, there is large within class heterogeneity in this regard too; namely, some futures are persistently in backwardation (e.g., coal, Russian ruble, NYSE composite index and 90-day T-bill futures), while others are more often than not in contango (e.g., cheese, Swiss franc, S&P 500 index and 10-year agency notes futures).

### 3. Long-short Speculative Pressure Portfolios

#### 3.1. Methodology

Our portfolio construction approach begins by measuring at each month end  $t$  the standardized *speculative pressure* signal  $\omega_{i,t} \equiv (SP_{i,t} - \overline{SP}_t)/\sigma_{SP,t}$  per futures contract  $i = 1, \dots, N$  where  $SP_{i,t}$  is as defined in Equation (1), and  $\overline{SP}_t$  and  $\sigma_{SP,t}$  are the corresponding mean and standard-deviation. As implied by the hedging pressure hypothesis, the portfolio strategy takes long positions in futures contracts with positive  $\omega_{i,t}$  (i.e., those that are most likely in backwardation) and short positions in futures contracts with negative  $\omega_{i,t}$  (i.e., those that are most likely in contango). The weight of each futures contract in the long-short portfolio is given by  $\omega_{i,t}$  and thus, the size of the positions depends on the strength of the signals. The long-short speculative pressure portfolio (hereafter, SP portfolio) thus formed is held for one month on a fully-collateralized basis ( $\tilde{\omega}_{i,t} = \omega_{i,t}/\sum_{i=1}^N |\omega_{i,t}|$ ) which, by construction, implies that 50% of the investor's mandate is assigned to long (L) positions and 50% to short (S) positions ( $\sum_{i=1}^{N_L} \tilde{\omega}_{i,t}^L = \sum_{i=1}^{N_S} |\tilde{\omega}_{i,t}^S| = 0.5$ ). The signal is obtained at month end  $t + 1$  to form another portfolio, and so on until the end of the sample period.

The analysis is conducted, separately, for each of the four class-specific cross-sections of futures contracts, and also cross-class. For the latter purpose, the cross-class (or ‘everywhere’) SP portfolio return,  $r_{SP,t+1}^E$ , is defined as the weighted combination of the class-specific SP portfolio returns

$$r_{SP,t+1}^E = \boldsymbol{\varphi}_t' \mathbf{r}_{SP,t+1} = \sum_{c=1}^4 \varphi_t^c r_{SP,t+1}^c \quad (2)$$

where  $\varphi_t^c, c = 1, \dots, 4$  are the class-allocation decisions based on past data, and  $r_{SP,t+1}^c$  is the month  $t$  to  $t + 1$  return of the SP portfolio for the  $c$ th futures class. We employ the unconstrained mean-variance optimized weights  $\boldsymbol{\varphi}_t = \frac{1}{\gamma} \boldsymbol{\Sigma}_t^{-1} \boldsymbol{\mu}_t$  where  $\boldsymbol{\mu}_t$  is the  $4 \times 1$  vector of mean excess returns for the class-specific SP portfolios and  $\boldsymbol{\Sigma}_t$  is the corresponding  $4 \times 4$  covariance matrix; both of which are estimated with data in the 60-month window preceding time  $t$ ; the coefficient of relative risk aversion  $\gamma$  is set to 5. The allocations,  $\boldsymbol{\varphi}_t$ , are standardized so as to ensure full investment.

### 3.2 Performance and Risk Analysis of Speculative Pressure Portfolios

Figure 1 shows the evolution of \$1 invested in the class-specific (commodity, currency, equity index, fixed income) portfolios and the everywhere long-short SP portfolio. The plot is based on total returns (excess returns plus the 1-month U.S. Treasury bill rate) over the common period October 1998 to May 2018 (since a past window of 60-month excess returns per class-specific SP portfolio is used to optimize the class weights in the everywhere portfolio). The figure endorses the SP strategy in commodity, currency and equity index futures markets but not in the fixed income futures market. During the second half of the sample period the equity SP risk premium seems to be particularly strong while the other SP risk premia have gradually weakened. The figure thus points towards the diversification benefits (in the form of stable returns) of an ‘everywhere’ SP portfolio.

[Insert Figure 1 around here]

The performance and risk of the long (L), short (S) and long-short (LS) portfolios based on speculative pressure are summarized in Table 2, Panel A. Over the period October 1993 to May 2018, the long-short SP portfolios obtain attractive annualized mean excess returns in commodity (4.12%,  $t$ -statistic of 2.62), currency (2.51%,  $t$ -statistic of 2.45) and equity index (4.03%,  $t$ -statistic of 2.29) futures markets. The SP risk premia are driven by both the outperformance of the backwarddated contracts that we go long (ranging from 2.47% for commodity to 5.29% for equity index futures) and the underperformance of the contangoed contracts that we go short (ranging from -5.77% for commodity to -2.42% for currency futures). The reward-to-risk profile of the SP portfolios is also attractive as borne out, for instance, by annualized Sharpe ratios of 0.61, 0.47 and 0.50 or by positive certainty equivalent returns (CER)<sup>6</sup> of 2.97% p.a., 1.74% p.a. and 2.39% p.a., respectively.

[Insert Table 2 around here]

These results confirm the extant wisdom of a speculative pressure premium in commodity futures markets and extend such knowledge to other futures markets such as currencies and equity indices. In contrast, no hedgers-to-speculators risk transfer is manifested in the fixed income futures market as borne out by a mean excess return of -0.74% ( $t$ -statistic of -1.49), a Sharpe ratio of -0.28 and a slightly negative CER at -0.91%.<sup>7</sup> A potential reason may be that interest rate risk is hedged by temporarily changing the modified duration of the portfolios or by adopting immunization

---

<sup>6</sup> The power utility CER is given by  $\left(\frac{12}{T}\right) \sum_{t=1}^T \frac{(1+r_{P,t})^{1-\gamma} - 1}{1-\gamma}$  with  $r_{P,t}$  the month  $t$  excess return of the portfolio. A positive CER implies that the portfolio is more attractive than the risk-free asset.

<sup>7</sup> Following Koijen et al. (2018), we adjust the fixed income and interest rate futures returns by the duration of the underlying security to ensure that the results are not duration-distorted. Thus, futures with higher (lower) durations are scaled down (up) in the long-short speculative pressure portfolio. The results are similar to those reported in Table 2 and thus we omit them to preserve space.

strategies. Alternatively, these findings could call for increased monitoring of the positions of market participants, in particular when it comes to verifying the classification of hedgers and speculators.

Table 2, Panel B shows the correlation structure of the long-short SP portfolios per class. It is interesting to note that the co-movement in their excess returns is mild ranging from -1.5% to 16.9%, at 5.5% on average. In line with Figure 1, these results suggest *prima facie* that the drivers of the SP risk premia may be class-specific rather than common across classes, and provide us with a motivation to construct an ‘everywhere’ SP portfolio based on unconstrained mean-variance optimized weights. As reported in the last column of Table 2, Panel A, the everywhere SP portfolio earns a statistically positive mean excess return (*t*-statistic of 2.57) over the period October 1998 to May 2018. Its Sharpe ratio at 0.55 is higher than 0.33, the average of the Sharpe ratios obtained for the class-specific SP portfolios over their common sample period. The incremental performance of the everywhere portfolio, alongside its very attractive crash risk profile, highlights the diversification benefits obtained when applying the SP strategy across futures classes.

### **3.3 Do Speculators in Futures Markets Outperform Known Rule-Based Strategies?**

As benchmarks for our SP portfolios, we consider a long-only portfolio that equally weights and monthly rebalances the contracts present in a given asset class at the time of portfolio formation (AVG, hereafter), as well as an ‘everywhere’ AVG portfolio based on unconstrained mean-variance optimized weights for the class-specific AVG portfolios. Following the literature (Asness et al., 2013; Koijen et al., 2018), we also form long-short fully-collateralized momentum, value and carry portfolios and ‘everywhere’ portfolio counterparts based on unconstrained mean-variance optimized weights. The momentum signal is the average daily futures return over the previous year;

namely,  $x_{i,t} \equiv \frac{1}{D} \sum_{j=0}^{D-1} r_{i,t-j}$  where  $D$  denotes the total number of days. The value signal is the difference between the log of the average of daily futures prices 4.5 to 5.5 years ago and the log of the futures price at month-end  $t$ ; namely,  $x_{i,t} \equiv \ln\left(\frac{1}{D} \sum_{d=4.5y}^{5.5y} f_{i,d}^{t_1}\right) - \ln(f_{i,t}^{t_1})$  where  $t_1$  is the maturity of the front-end contract. The carry signal is the month-end  $t$  roll yield defined as the difference in the log prices of the front and second nearest contracts,  $x_{i,t} \equiv \ln(f_{i,t}^{t_1}) - \ln(f_{i,t}^{t_2})$  where  $t_1$  and  $t_2$  denote the corresponding contract maturities. Futures with higher standardized signals,  $\omega_{i,t} = (x_{i,t} - \bar{x}_t)/\sigma_{x,t}$ , are expected to outperform those with lower standardized signals.

Figure 2 presents the Sharpe ratios of the different strategies per class and cross-class. It reveals that the SP risk premia identified in commodity, currency and equity index futures markets are similar in size to the risk premia stemming from momentum or carry and substantially exceed those earned on AVG or value. The fixed income class behaves differently from the other classes; we note then the remarkable performance of the long-only AVG portfolio as highlighted by a Sharpe ratio at 0.54 and the poor performance of all long-short strategies, including ours.

[Insert Figure 2 around here]

To complete the picture drawn in Figure 2, Appendix A reports detailed summary statistics for the excess returns of the AVG, momentum, value and carry portfolios. It confirms the well-known results that momentum and carry work well in commodity and equity index futures markets (Jegadeesh and Titman, 1993; Miffre and Rallis, 2007; Asness et al., 2013; Kojen et al., 2018). The value strategy performs well in currency futures markets but poorly elsewhere. Diversifying the risk of a given strategy across markets is a source of outperformance for carry and AVG ( $t$ -statistics for the mean excess return of 4.11 and 1.98, respectively) but not necessarily for momentum and value ( $t$ -statistics of 1.29 and 1.74, respectively).

We then test whether speculators earn an additional return for their skills at picking up mispriced contracts over and above well-known strategies through the following time-series regression:

$$r_{SP,t} = \alpha + \beta_{AVG}r_{AVG,t} + \beta_{Mom}r_{Mom,t} + \beta_{Value}r_{Value,t} + \beta_{Carry}r_{Carry,t} + \varepsilon_t \quad (3)$$

where  $r_{SP,t}$  is the month  $t$  excess return of the long-short SP portfolio, and  $r_{AVG,t}$ ,  $r_{Mom,t}$ ,  $r_{Value,t}$  and  $r_{Carry,t}$  are the month  $t$  excess returns of the AVG, momentum, value and carry portfolios, respectively. Accordingly, the intercept measures the aforementioned additional returns. The OLS coefficient estimates and Newey-West robust  $t$ -statistics are presented in Table 3.

[Insert Table 3 around here]

The momentum coefficient,  $\hat{\beta}_{Mom}$ , is positive and strongly significant at the 1% level in commodity, currency and equity index futures markets. As previously shown, our result confirms that, pervasively across commodity, currency and equity index futures classes, speculators are positioned predominantly to benefit from trends, that is, they pursue momentum strategies (e.g., Moskowitz et al., 2012; Campbell & Associates, 2013; Dewally et al., 2013; and Bhardwaj et al., 2014). The results reveal also that currency futures' speculators often trade on carry in line with extant wisdom (e.g., Fama, 1984; Menkhoff et al., 2012; Kojen et al., 2018). The insignificant intercept coefficient suggests that speculators in futures markets do not earn returns for picking up mispriced futures over and above those harnessed through publicly-available rule-based trading strategies such as momentum and carry. This result reaffirms a large and long-lasting literature that highlights the difficulty of active managers to outperform well-designed benchmarks (Jensen, 1968; Malkiel, 1995; Dewally et al., 2013; Bhardwaj et al., 2014).

### 3.4 Common Structure of Class-Specific Speculative Pressure Premia

This section seeks to identify whether common risk factors drive the risk premia of the class-specific SP portfolios. To do this, we first extract the principal components of the four class-specific SP portfolio excess returns. As Table 4, Panel A shows, the first principal component merely explains 30.81% of the total variation. This result suggests that the excess returns of the SP portfolio do not represent compensation for exposure to a *common* underlying factor across futures classes. Further, the low explanatory power of the first principal component is also in line with the weak return correlations obtained across classes of futures (c.f., Table 2, Panel B). Both results point towards the lack of a common factor structure among the class-specific SP excess returns.

[Insert Table 4 around here]

Inspired by Asness et al. (2013) and Koijen et al. (2018), we complement this preliminary analysis by regressing the excess returns of the SP portfolios on business cycle variables, as well as shocks to global market liquidity, global funding liquidity and global volatility.<sup>8</sup> The idea here is to test whether the performance of the SP portfolios drops during market downturns, when market liquidity suddenly dries out, when funding liquidity plunges and/or when global volatility unexpectedly rises. Such findings, consistent with rational pricing, would validate the hypothesis that the SP risk premia compensate investors for the drawdowns incurred in difficult times.

The business cycle variables are the changes in U.S. industrial production, default spread (calculated as the yield difference between Moody's seasoned Baa and Aaa corporate bonds), term spread (measured as the yield difference between 10-year Treasury constant maturity bond and 3-

---

<sup>8</sup> The choice of risk factors is dictated by evidence that to some extent the momentum, value and carry premia relate to global recession, liquidity and volatility risks (Asness et al., 2013; Koijen et al., 2018). Since according to Section 3.3 speculators trade on momentum and carry, it is reasonable to hypothesize that the SP risk premia could likewise compensate investors for these risks.

month Treasury constant maturity bill), and the Kilian's index of global real economic activity. In order to proxy for market liquidity we first calculate at each month-end  $t$  the Amivest liquidity ratio (Amihud et al., 1997) per futures contract,  $L_{i,t} = \frac{1}{D} \sum_{d=1}^D \frac{\$Volume_{i,d}}{|r_{i,d}|}$  (where  $\$Volume_{i,d}$  is the dollar daily volume of a given contract  $i$  in day  $d$ ,  $D$  is the number of days in the two months prior to  $t$  and  $r_{i,d}$  is the day  $d$  excess return of futures  $i$ ). Then we equally weight the  $L_{i,t}$  measure per futures  $i$  within each class of futures and average the four class-specific liquidity measures to obtain a global proxy for market liquidity. We proxy funding liquidity via the TED spread (measured as the difference between the 3-month U.S. LIBOR rate and the 3-month U.S. Treasury-bill rate). Finally, we proxy global volatility by first calculating the monthly realized variance (sum of the squared daily excess returns within a month) per futures contract and then the global volatility is the square root of the average of realized variances of futures within a class and finally across classes. Innovations or shocks to global market liquidity (denoted as  $L_t$  hereafter), global funding liquidity ( $TED_t$ ) and global volatility ( $v_t$ ) are defined as residuals from AR(2) models; similar unreported results are obtained with AR(1) or AR(3) models.

Table 4, Panel B, reports estimated coefficients and Newey-West adjusted  $t$ -statistics from contemporaneous regressions of the SP risk premia on the business cycle variables and the shocks to global liquidity and volatility risk factors. Practically, this amounts to replacing the independent variables of Equation (3) by the aforementioned measures. As the regressors are no longer tradeable, the intercept cannot be interpreted as a measure of abnormal performance. There is no evidence that the SP portfolios are exposed to business cycle variables nor to global market and funding liquidity shocks. The coefficient of global volatility is negative and statistically significant for the currency and equity index SP portfolios, and zero in statistical terms for the commodity and fixed income SP portfolios; thus, there is no pervasive evidence that the SP risk premia



compensates investors for global volatility risk. Altogether these results suggest that the performance of the SP portfolios is not driven by known global risk factors.

#### 4. Cross-Sectional Pricing

This section tests whether the long-short SP portfolios price the cross section of futures. Let  $N$  denote the number of test assets. In the spirit of the Fama-MacBeth (1973) two-stage approach, we first measure the risk exposures of each test asset by OLS estimation of  $N$  time-series regressions

$$r_{i,t} = a_i + \mathbf{b}_i \mathbf{F}_t + \varepsilon_{i,t} \quad (4)$$

where  $r_{i,t}$  is the month  $t$  excess return of test asset  $i = 1, \dots, N, t = 1, \dots, T$ .  $\mathbf{F}_t$  is a vector of excess returns for the  $K$  risk factors that are deemed to price the cross section and  $\varepsilon_{i,t}$  are residuals. The OLS estimates,  $\hat{a}_i$  and  $\hat{\mathbf{b}}_i'$  in Equation (4), are obtained over the full sample. At stage two, we obtain the prices of risk through sequential (monthly) cross-sectional OLS regressions

$$r_{i,t} = \lambda_{0,t} + \lambda_t \hat{\mathbf{b}}_i + \epsilon_{i,t} \quad (5)$$

estimated at each month  $t = 1, \dots, T$ . We deploy a two-sided test for the significance of each risk price,  $H_0: \bar{\lambda}_{j,t} = 0$ , using the Shanken (1992) corrected  $t$ -statistic with  $\bar{\lambda}_{j,t} = \sum_{t=1}^T \hat{\lambda}_{j,t} / T$ .

Three specifications are considered. The first baseline model just includes the excess returns of the long-short SP portfolio ( $\mathbf{F}_t = \{r_{SP,t}\}$ ). The second model augments the baseline specification with off-the-shelf tradeable risk factors emanating from the asset pricing literature ( $\mathbf{F}_t = \{r_{SP,t}, r_{AVG,t}, r_{Mom,t}, r_{Value,t}, r_{Carry,t}\}$ ). The third model adds to the SP factor the non-tradeable factors – macroeconomic risks, shocks to global market liquidity, global funding liquidity and global volatility ( $\mathbf{F}_t = \{r_{SP,t}, IP_t, DS_t, TERM_t, Kilian_t, L_t, TED_t, v_t\}$ ). The factor mimicking portfolios used as regressors are either class-specific (commodity, currency, equity index and fixed

income futures portfolios) or cross-class ('everywhere' futures portfolios). The test assets are the  $N = 84$  futures contracts throughout to allow for the possibility that the speculative pressure factor in a given market influences the pricing of futures outside that market (de Roan et al., 2000).

[Insert Table 5 around here]

Table 5 presents estimates for  $\bar{\lambda}_{0,t}$  and  $\bar{\lambda}_{j,t}$ , corresponding significance tests and adjusted- $R^2$  from Equation (5). It also reports the increase in explanatory power obtained when moving from a model that excludes the SP risk factor to a model that includes it ( $\Delta \text{adj} - R^2$ ). The prices of SP risk are found to be positive and often statistically significant across models. On average, the price of SP risk equals 0.39% a month or 4.69% a year. Echoing our long-short portfolio results, this cross-sectional pricing analysis reveals that the speculative pressure signals in commodity, currency and equity index SP risk factors have significant information content. Also in line with the portfolio results, the evidence from these cross-sectional regressions suggests that fixed income futures markets behave differently as borne out by the weak pricing ability of their SP risk factor.

## 5. Robustness Checks

This section assesses our main findings in the light of alternative CFTC data, portfolio construction techniques, ranking/holding periods, transaction costs, illiquidity controls, and sub-periods.

### 5.1 Alternative COT Reports

We begin by considering alternative CFTC datasets. First, instead of the long and short positions of large speculators, we obtain from the Futures-Only COT report the weekly long ( $L_{i,w}$ ) and short ( $S_{i,w}$ ) positions of large hedgers (also called commercial traders) to measure for each contract a standardized hedging pressure signal  $\omega_{i,t} \equiv (HP_{i,t} - \overline{HP}_t)/\sigma_{HP,t}$  where  $HP_{i,t} \equiv \frac{1}{52} \sum_{w=1}^{52} \frac{S_{i,w} - L_{i,w}}{L_{i,w} + S_{i,w}}$ .

According to the hedging pressure hypothesis, backwardated futures with the most positive  $\omega_{i,t}$  are expected to outperform contangoed futures with the most negative  $\omega_{i,t}$ .

Second, we employ the *Combined Futures and Options* report of the CFTC which provides data on the long and short positions of large speculators in both futures and options markets; futures positions are synthetically replicated using portfolios of options.

Third, we also employ data from the *Disaggregated COT* report of the CFTC that splits the category of large speculators in commodity futures markets into two sub-categories: 1) ‘managed money’ (CTAs, CPOs and hedge funds) and 2) ‘other reportables’ (a wide array of mostly long non-commercial traders). Likewise, the *Traders in Financial Futures* (TFF) report splits the category of large speculators in financial futures markets into two sub-categories: 1) ‘levered funds’ and 2) ‘asset manager/institutional’. The participants in the ‘managed money’ and ‘levered funds’ sub-categories take long and short positions in futures markets and, as such, they strictly qualify as speculators in the sense of Cootner (1960)’s theory;<sup>9</sup> accordingly, we refine our analysis by measuring the SP signal, Equation (1) using data on these two types of traders only.

Table 6 summarizes the outcome of this analysis. Panel A summarizes the alternative SP portfolios, and reports the intercept ( $\alpha$ ) and slope coefficient ( $\beta$ ) from a time-series regression of the excess returns of a given alternative SP portfolio on the excess returns of the corresponding baseline SP portfolio (as obtained in our main analysis). We test for the potential superiority of the refined SP premium over the baseline SP premium ( $\alpha > 0$ ). Panel B focuses on the ability of the alternative

---

<sup>9</sup> The participants in the ‘other reportables’ and ‘asset manager/institutional’ sub-categories do not qualify as pure speculators in Cootner (1960) sense as they merely seek naïve long-only strategic exposure to a given asset class.

SP risk factors to price cross-sectionally the  $N = 84$  futures contracts after controlling for the corresponding AVG, momentum, value and carry risk factors. The starting dates for the class-specific portfolios depend on data availability: October 1993 for the Futures-Only COT report, March 1996 for the Combined Futures and Options COT report, and June 2007 for the Disaggregated COT and TFF reports. The ‘everywhere’ portfolios always start 5 years later by construction (class weights optimization). All the portfolios end in May 2018.

[Insert Table 6 around here]

The results confirm the main findings. Trading on the alternative signals generates significant mean excess returns in commodity and equity index futures markets, in an everywhere context and, to a lower extent, in currency futures markets. There is no SP premia in fixed income futures markets. With only four exceptions, the null hypothesis  $\alpha = 0$  is not rejected at conventional significance levels and thus, generally speaking, the portfolios based on the alternative signals perform similarly as those discussed in our main analysis (Section 3). The cross-sectional pricing results are also analogous, in terms of both statistical and economic relevance, as those discussed earlier.

## 5.2 Alternative Portfolio Construction Methods

Thus far, we have modeled the SP risk premium using the entire cross section of futures available at each portfolio formation time with weights given by the standardized signals; namely,  $\omega_{i,t} \equiv (SP_{i,t} - \overline{SP}_t) / \sigma_{SP,t}$ . We now test, first, the robustness of our conclusions to portfolios based on the extreme terciles. Second, we deploy other weighting schemes on the entire cross section of futures. The first scheme is based on equal weights, going long ( $\omega_{i,t}^L \equiv +1$ ) the 50% of the cross section with highest  $SP_{i,t}$  in Equation (1) and short ( $\omega_{i,t}^S \equiv -1$ ) the remaining 50%. The second scheme is based on the standardized ranks; namely,  $\omega_{i,t} \equiv (z_{i,t} - \bar{z}_t) / \sigma_{Z,t}$  where  $z_{i,t} \in \{1, \dots, N\}$  is the  $i$ th

asset rank at time  $t$  based on the SP signal as obtained from Equation (1),  $\bar{z}_t$  and  $\sigma_{z,t}$  are the time  $t$  cross-sectional mean and standard deviation of  $z_{i,t}$ . The third weighting scheme, inspired by risk parity (Moskowitz et al., 2012; Asness et al., 2013), allocates more (less) weights to assets with lower (higher) volatilities.<sup>10</sup> In all settings, the long and short positions are fully collateralized with equal mandates allocated to the long and short portfolios, as previously. Table 7 shows the results.

[Insert Table 7 around here]

The portfolio results in Table 7, Panel A, are broadly consistent with those obtained thus far; the SP risk premia are significantly positive in commodity, currency and equity index futures markets but not in fixed income futures markets. The time-series regression results also suggest that the alternative portfolio formation methods do not add value to those employed in our main analysis. The cross-sectional results, while weaker for the equal weight scheme, confirm the presence of a positive price of SP risk in commodity, currency, and equity index futures markets.<sup>11</sup>

### 5.3 Alternative Ranking and Holding Periods

Thus far we have used a lookback (ranking) period of 12 months for the SP signals, and the long-short portfolios thus formed were held for one month. Figure 3 tests the sensitivity of the Sharpe ratios to the choice of ranking and holding periods. Panel A allows for various ranking periods, while adhering to the one month holding period. Panel B allows for various holding periods, while

---

<sup>10</sup> The allocations are given by the risk-adjusted speculative pressure  $\widetilde{SP}_{i,t} \equiv SP_{i,t}\sigma_{i,t}^{-1}$ , with  $\sigma_{i,t}$  the standard deviation of the daily excess returns of the  $i$ th futures contract in the preceding year. As previously, we use the standardized signal  $\omega_{i,t} \equiv (\widetilde{SP}_{i,t} - \widetilde{SP}_t)/\sigma_{\widetilde{SP},t}$ .

<sup>11</sup> In these cross-sectional regressions, in place of the momentum, value and carry portfolios based on the full cross-section and standardized signals, for consistency we use as independent variables variants thereof based on terciles, equal weights, standardized ranking, and risk-parity weights.

fixing the ranking period to 12 months. In order to provide comparable results, both panels are based on the common sample from October 1994 to May 2018 for the asset-class specific portfolios (October 1999 to May 2018 for the everywhere portfolios). The general picture remains unchanged. However, higher Sharpe ratios are obtained with shorter ranking periods in equity index futures markets and over longer ranking periods in commodity and currency futures markets.

[Insert Figure 3 around here]

#### 5.4 Transaction Costs

To get a sense of how trading intensive the speculative pressure strategy is, we measure the portfolio *turnover* (TO) defined as the time average of all the trades incurred:

$$TO = \frac{1}{T-1} \sum_{t=1}^{T-1} \sum_{i=1}^N (|\tilde{\omega}_{i,t+1} - \tilde{\omega}_{i,t+}|) \quad (6)$$

where  $t = 1, \dots, T$  denotes each of the (month-end) portfolio formation periods in the sample,  $\tilde{\omega}_{i,t}$  is the weight assigned to the  $i$ th futures contract at month  $t$  as dictated by the SP strategy,  $\tilde{\omega}_{i,t+} \equiv \tilde{\omega}_{i,t} \times e^{r_{i,t+1}}$  is the actual portfolio weight right *before* the next rebalancing at  $t + 1$ , and  $r_{i,t+1}$  is the monthly return of the  $i$ th futures from month-end  $t$  to month-end  $t + 1$ . Thus, TO captures the mechanical evolution of the weights due to within-month price dynamics.

We also calculate the excess return of the long-short portfolio  $P$  net of transaction costs  $TC$

$$\tilde{r}_{P,t+1} = \sum_{i=1}^N \tilde{\omega}_{i,t} r_{i,t+1} - TC \sum_{i=1}^N |\tilde{\omega}_{i,t} - \tilde{\omega}_{i,t-1+}| \quad (7)$$

and calculate the breakeven round-trip proportional trading cost required to make  $\tilde{r}_{P,t+1} = 0$ .

The results are reported in Table 8. Interestingly, with an average monthly turnover of 0.16, the SP strategy is far less trading intensive than the momentum or carry strategies with an average turnover of 0.37 and 0.47, respectively. The required proportional transaction costs that make the SP

portfolio unprofitable are remarkably high in commodity, currency and equity index futures markets and cross-market as well (at 1.66% on average). This breakeven transaction costs compare favorably to those obtained for the momentum (1.24%), value (0.70%) or carry (1.47%) strategies and to the round-trip transaction costs reported in the futures pricing literature (0.086% according to Marshall et al., 2012). Thus, we can conclude that net of reasonable transaction costs, the SP strategy delivers appealing Sharpe ratios in commodity, currency and equity index futures markets.

[Insert Table 8 around here]

### 5.5 Liquidity Considerations

Thus far, we have included in the analysis any futures contract with open interest data available on non-commercial participants at the time of portfolio formation. This could create liquidity distortions which we circumvent now by focusing on a restricted cross-section that excludes the 10% or 20% least liquid futures contracts (namely, the decile or quintile with lowest open interests at the time of portfolio formation month  $t$ ). Summary statistics for the resulting SP premia are presented in Table 9 and to ease comparison, we reproduce the risk premia obtained with the whole cross-section of contracts from Table 2. Differences in performance are negligible which suggests that the risk premia identified in our main analysis do not reflect compensation for liquidity risk.

[Insert Table 9 around here]

### 5.6 Sub-Period Analysis

Finally, we test the robustness of our key findings to the choice of timeframe by measuring the Sharpe ratios of the SP portfolios over various sub-periods: *i*) high versus low volatility regimes,<sup>12</sup>

---

<sup>12</sup> The volatility regimes per class or ‘everywhere’ (cross-class) are obtained by fitting a GARCH(1,1) model to the corresponding AVG excess returns. The means of the fitted annualized

*ii*) recession versus expansion months according to the NBER business cycle dating, *iii*) the Dodd–Frank Wall Street Reform dated July 2010<sup>13</sup>, *iv*) the U.S. Quantitative Easing (QE) from December 2008 onwards, and *v*) non-overlapping 5-year rolling periods. Table 10 reports the results.

[Insert Table 10 around here]

The main findings are unchallenged. The results as regards to which sub-periods provide the best SP premia are not consistent across futures classes. For example, the SP premia are larger during expansions than recessions in currency and equity index futures markets but this pattern is reversed in commodity futures markets. Likewise, the SP strategy performs better post-QE than pre-QE period in commodity and equity index futures markets, and the other way round in currency futures markets. This cross-class heterogeneity reinforces our previous finding that the observed SP risk premia are not driven by a common factor structure, and ensures diversification as borne out by the superior Sharpe ratios of the ‘everywhere’ SP portfolio in all (but one) of the sub-periods.

## 6. Conclusions

Using data from September 30, 1992 to May 25, 2018 on a broad cross-section of 84 futures contracts pertaining to four asset classes this article investigates the price formation role of speculative pressure (net positions of speculators). First, we assess the extent to which long-short speculative pressure portfolios capture a premium in commodity, currency, equity index and fixed

---

volatilities, used as cut-off points, equal 12.21% for commodities, 8.03% for currencies, 14.40% for equity indices, 3.53% for fixed income securities, and 3.12% for the everywhere portfolio.

<sup>13</sup> One of the main regulatory arrangements of the Dodd–Frank Wall Street Reform and Consumer Protection Act was to authorize the U.S. CFTC to establish higher margin requirements to protect the financial integrity of futures markets.



income futures markets. Second, we test whether the thus formed futures-class specific and ‘everywhere’ speculative pressure factors can price the broad cross-section of futures returns.

Long-short portfolios based on speculative pressure as sorting signal are able to generate economically sizeable and statistically significant mean excess returns in commodity (at 4.12% p.a.), currency (2.51% p.a.) and equity index futures markets (4.03% p.a.). Speculative pressure factors constructed from commodity, currency and equity index futures data are able to explain the broad cross-section of futures returns after accounting for momentum, value and carry factors or for macroeconomic, liquidity and volatility risk factors. These key findings withstand a battery of robustness tests based on alternative Commitments of Traders reports data, alternative portfolio construction techniques, holding and ranking periods, sub-periods, and controlling for transaction costs and illiquidity. The main finding – well-functioning futures markets that efficiently transfer the price risk from hedgers to speculators – is reassuring from a regulatory perspective. In sharp contrast, the above finding does not extend to interest rate and fixed income futures markets.

## Appendix A. Traditional risk premia

The appendix presents summary statistics for the excess returns of traditional benchmarks. AVG is a long-only equally-weighted portfolio of the constituents of a given market. Momentum, Value and Carry are long-short portfolios based on the corresponding signals. The results are presented per class of futures (commodity, currency, equity index and fixed income) and across classes (everywhere). Mean and StDev have been annualized. Newey-West h.a.c. robust  $t$ -statistics are reported in parentheses for the mean excess returns. Sharpe ratio is measured as Mean divided by StDev, Sortino ratio is calculated as Mean divided by annualized downside deviation and Omega ratio is measured as the probability weighted ratio of gains versus losses (the latter two ratios use 0% as threshold). CER is the certainty equivalent return that an investor with power utility preferences is willing to accept instead of engaging in the SP strategy. The sample period is October 1993 to May 2018 for the class-specific futures and October 1998 to May 2018 for the everywhere portfolios.

	AVG					Momentum					Value					Carry				
	Comm.	Currency	Equity index	Fixed income	Every-where	Comm.	Currency	Equity index	Fixed income	Every-where	Comm.	Currency	Equity index	Fixed income	Every-where	Comm.	Currency	Equity index	Fixed income	Every-where
Mean	-0.0079 (-0.27)	0.0144 (0.81)	0.0273 (0.90)	0.0192 (2.60)	0.0162 (1.98)	0.0468 (2.59)	0.0075 (0.46)	0.1387 (2.83)	0.0009 (0.13)	0.0163 (1.29)	0.0238 (1.19)	0.0295 (2.69)	-0.0258 (-0.74)	0.0008 (0.11)	0.0144 (1.74)	0.0479 (2.06)	0.0378 (1.64)	0.1658 (3.12)	0.0082 (1.16)	0.0385 (4.11)
StDev	0.1207	0.0794	0.1393	0.0353	0.0387	0.0946	0.0638	0.2116	0.0361	0.0525	0.0979	0.0505	0.1450	0.0341	0.0375	0.1095	0.1015	0.2376	0.0330	0.0407
Skewness	-0.7241 (-5.09)	-0.5297 (-3.72)	-0.8300 (-5.83)	-0.0641 (-0.45)	-0.1776 (-1.11)	0.0998 (0.70)	-0.8210 (-5.77)	-0.2911 (-2.04)	-0.1314 (-0.92)	-0.5189 (-3.25)	-0.0722 (-0.51)	-0.0380 (-0.27)	-0.2644 (-1.86)	-0.1123 (-0.79)	1.6504 (10.35)	0.3932 (2.76)	1.8025 (12.66)	0.4203 (2.95)	-0.1618 (-1.14)	-0.2968 (-1.86)
Excess kurtosis	3.7315 (13.10)	2.6712 (9.38)	2.1108 (7.41)	1.3122 (4.61)	1.1585 (3.63)	0.0381 (0.13)	2.8339 (9.95)	3.1765 (11.16)	1.0723 (3.77)	0.4598 (1.44)	0.2559 (0.90)	2.6499 (9.31)	6.3705 (22.37)	0.9114 (3.20)	13.7906 (43.24)	1.7036 (5.98)	44.4139 (155.98)	5.9999 (21.07)	1.5192 (5.34)	1.6953 (5.32)
99% VaR (Cornish-Fisher)	0.1237	0.0729	0.1252	0.0257	0.0290	0.0577	0.0608	0.1870	0.0277	0.0398	0.0669	0.0409	0.1690	0.0257	0.0347	0.0712	0.2947	0.2162	0.0259	0.0310
% of positive months	0.5338	0.5541	0.5642	0.5473	0.5508	0.5507	0.5439	0.5980	0.5203	0.5847	0.5169	0.6014	0.4493	0.5034	0.5636	0.5405	0.6014	0.5912	0.5372	0.6483
Maximum drawdown	-0.4874	-0.3164	-0.6007	-0.0720	-0.1040	-0.2215	-0.3517	-0.4336	-0.1460	-0.1181	-0.3271	-0.0952	-0.7236	-0.1914	-0.0800	-0.2571	-0.2966	-0.4854	-0.0917	-0.0753
Sharpe ratio	-0.0655	0.1817	0.1958	0.5442	0.4194	0.4945	0.1172	0.6554	0.0248	0.3096	0.2432	0.5837	-0.1780	0.0226	0.3825	0.4372	0.3722	0.6981	0.2476	0.9465
Sortino ratio	-0.0835	0.2392	0.2408	0.8678	0.6187	0.8745	0.1437	0.8601	0.0370	0.4299	0.3917	0.8348	-0.2368	0.0349	0.6433	0.7348	0.4339	0.9878	0.3627	1.4073
Omega ratio	0.9489	1.1551	1.1665	1.5044	1.3791	1.4339	1.0978	1.7117	1.0190	1.2555	1.1956	1.5998	0.8539	1.0168	1.3730	1.4094	1.4930	1.8365	1.2089	2.0127
CER	-0.0474	-0.0018	-0.0254	0.0161	0.0124	0.0245	-0.0030	0.0173	-0.0024	0.0093	-0.0002	0.0230	-0.0843	-0.0021	0.0109	0.0185	0.0119	0.0196	0.0054	0.0342

## References

- Amihud, Y., Mendelson, H., & Lauterbach, B. (1997). Market microstructure and securities values: Evidence from the Tel Aviv Stock Exchange. *Journal of Financial Economics*, 45, 365-390.
- Asness, C., Moskowitz, T., & Pedersen, L. (2013). Value and momentum everywhere. *Journal of Finance*, 68, 929-985.
- Basu, D. & Miffre, J. (2013). Capturing the risk premium of commodity futures: The role of hedging pressure. *Journal of Banking and Finance*, 37, 2652-2664.
- Bessembinder, H. (1992). Systematic risk, hedging pressure, and risk premiums in futures markets. *Review of Financial Studies*, 5, 637-667.
- Bhardwaj, G., Gorton, G., & Rouwenhorst, K. G. (2014). You can fool some of the people all of the time: The inefficient performance of commodity trading advisors. *Review of Financial Studies*, 27, 3099-3132.
- Campbell & Company (2013). Prospects for CTAs in a rising interest rates environment. Campbell White Paper Series January 2013.
- Chang, E. (1985). Return to speculators and the theory of normal backwardation. *Journal of Finance*, 40, 193-208.
- Cootner, P. (1960) Returns to speculators: Telser vs. Keynes, *Journal of Political Economy* **68**, 396-404.
- Cootner, P. (1967). Speculation and hedging. *Food Research Institute Studies*, 7, 65-103.
- Daskalaki, C., Kostakis, A., & Skiadopoulos, G. (2014). Are there common factors in individual commodity futures returns? *Journal of Banking and Finance*, 40, 346-363.
- de Roon, F. A., Nijman, T. E., & Veld, C. (2000). Hedging pressure effects in futures markets. *Journal of Finance*, 55, 1437-1456.

- Dewally, M., Ederington, L., & Fernando, C. (2013). Determinants of trader profits in commodity futures markets. *Review of Financial Studies*, 26, 2648-2683.
- Fama, E. F. (1984). Forward and spot exchange rates. *Journal of Monetary Economics*, 14, 319-338.
- Fama, E. F. & MacBeth, J. D. (1973). Risk, returns, and equilibrium: Empirical tests. *Journal of Political Economy*, 81, 607-636.
- Fattouh, B., Kilian, L., & Mahadeva, L. (2013). The role of speculation in oil markets: What have we learned so far?, *Energy Journal* 34, 7-33
- Gorton, G., Hayashi, F., & Rouwenhorst, G. (2013). The fundamentals of commodity futures returns. *Review of Finance*, 17, 35-105.
- Hicks, J. R. (1939). *Value and Capital*. Oxford University Press, Cambridge, U.K.
- Hirshleifer, D. (1988). Residual risk, trading costs, and commodity futures risk premia. *Review of Financial Studies*, 1, 173–193.
- Hirshleifer, D. (1989). Determinants of hedging and risk premia in commodity futures markets. *Journal of Financial and Quantitative Analysis*, 24, 313-331.
- Irwin, S., Sanders, D. & Merrin R. (2009). Devil or angel? The role of speculation in the recent commodity price boom (and bust), *Journal of Agricultural and Applied Economics*, 377–391
- Jensen, M., (1968). The performance of mutual funds in the period 1945–1964. *Journal of Finance*, 23, 389-416.
- Jegadeesh, N. & Titman, S. (1993). Returns to buying winners and selling losers: Implications for stock market efficiency. *Journal of Finance*, 48, 65-91.
- Kang, W., Rouwenhorst, G., & Tang, K. (2019). A tale of two premiums: The role of hedgers and speculators in commodity futures markets. *Journal of Finance*, forthcoming.

- Keynes, M. (1930). *A Treatise on Money II: The Applied Theory of Money*. Edition, Macmillan and Co., U.K.
- Koijen, R., Moskowitz, T., Pedersen, L., & Vrugt, E. (2018). Carry. *Journal of Financial Economics*, 127, 197-225.
- Malkiel, B., (1995). Returns from investing in equity mutual funds 1971 to 1991. *Journal of Finance*, 50, 549-572.
- Marshall, B. R., Nguyen, N. H., & Visaltanachoti, N. (2012). Commodity liquidity measurement and transaction costs. *Review of Financial Studies*, 25, 599–638.
- Menkhoff, L., Sarno, L., Schmeling, M., & Schrimpf, A. (2012). Currency momentum strategies. *Journal of Financial Economics*, 106, 620–684.
- Miffre, J. & Rallis, G. (2007). Momentum strategies in commodity futures markets. *Journal of Banking and Finance*, 31, 1863-1886.
- Moskowitz, T. J., Ooi, Y.-H., & Pedersen, L. H. (2012). Time series momentum. *Journal of Financial Economics*, 104, 228-250.
- Rouwenhorst, K. G. & Tang, K. (2012). Commodity investing. *Annual Review of Financial Economics*, 4, 447-467.
- Shanken, J. (1992). On the estimation of beta-pricing models. *Review of Financial Studies*, 5, 1-33.
- Stoll, H., & Whaley, R. (2010). Commodity index investing and commodity futures prices. *Journal of Applied Finance*, 20, 7-46.
- Szymanowska, M., de Roon, F., Nijman, T., & Van Den Goorbergh, R. (2014). An anatomy of commodity futures risk premia. *Journal of Finance*, 69, 453-482.

**Table 1. Overview of futures contracts**

The table reports for 84 futures contracts the annualized mean and standard deviation of excess returns, as well as the mean and standard deviation of the speculative pressure measure, Equation (1), based on the prior year speculators' positions. %SP>0 is the percentage of months when speculative pressure is positive (speculators are net long). The sample period is September 1992 to May 2018.

	Excess return		Speculative pressure				Excess return		Speculative pressure		
	Mean	StDev	Mean	StDev	%SP>0		Mean	StDev	Mean	StDev	%SP>0
<b>Panel A: Commodities (N=43)</b>						<b>Panel B: Currencies (N=11)</b>					
BFP milk	0.00	0.25	0.03	0.37	54.77	African rand	0.02	0.16	0.45	0.11	100.00
Brent crude oil	-0.05	0.32	-0.40	0.22	1.41	Australian dollar	0.02	0.12	0.24	0.43	72.03
Butter cash	0.00	0.23	-0.02	0.11	50.00	Brazilian real	0.04	0.19	0.19	0.40	76.42
Cheese cash	0.01	0.19	-0.59	0.17	0.00	Canadian dollar	0.00	0.08	0.08	0.35	56.57
Coal	-0.09	0.25	0.72	0.10	100.00	Euro	0.00	0.10	0.08	0.38	55.95
Cocoa	0.01	0.30	0.18	0.31	71.04	Japanese yen	-0.03	0.11	-0.21	0.35	34.68
Coffee C	-0.04	0.36	0.19	0.24	75.08	Mexican peso	0.03	0.12	0.31	0.36	81.18
Corn	-0.07	0.27	0.27	0.24	90.24	New Zealand dollar	0.02	0.13	0.35	0.28	82.07
Cotton number 2	-0.02	0.28	0.10	0.32	66.67	Russian ruble	0.05	0.25	0.41	0.33	90.20
Electricity JPM	-0.16	0.49	0.48	0.30	92.09	Sterling	0.00	0.08	-0.05	0.30	39.39
Ethanol	0.30	0.36	0.44	0.20	96.91	Swiss franc	0.00	0.11	-0.15	0.28	30.07
Feeder cattle	0.01	0.15	0.23	0.16	90.24						
Frozen orange juice	-0.05	0.30	0.28	0.27	79.46	<b>Panel C: Equity indices (N=19)</b>					
Frozen pork bellies	0.02	0.37	0.02	0.18	54.73	DJIA	0.04	0.15	-0.05	0.27	50.35
Gold 100 oz (CMX)	0.02	0.16	0.27	0.41	75.08	E-mini MSCI EAFE	0.02	0.18	0.40	0.35	86.44
Gold 100 oz (NYL)	0.06	0.18	0.27	0.03	100.00	E-mini MSCI emerging	0.00	0.24	0.39	0.21	94.90
Heating oil	0.04	0.30	0.15	0.22	74.75	E-mini NASDAQ 100	0.04	0.25	0.18	0.24	70.27
High grade copper	0.05	0.26	0.09	0.26	57.24	E-mini Russell 2000	0.08	0.18	-0.23	0.26	25.14
HR coil steel	-0.02	0.20	-0.22	0.09	0.00	E-mini S&P 400 midcap	0.08	0.16	0.23	0.36	80.11
Lean hogs	-0.07	0.28	0.18	0.19	80.47	Eurotop 100	0.06	0.17	0.41	0.48	74.51
Light crude oil	0.03	0.32	0.20	0.23	82.15	Major market index	0.16	0.13	0.16	0.39	72.32
Live cattle	-0.01	0.15	0.25	0.16	94.28	Maxi value line	0.09	0.14	-0.48	0.26	0.00
Lumber	-0.10	0.31	0.09	0.21	62.84	Mini Dow Jones	0.08	0.13	0.19	0.29	75.81
Mini soyabeans	0.09	0.28	0.68	0.14	100.00	Mini S&P 500	0.04	0.15	-0.01	0.15	43.57
Natural gas	-0.22	0.48	-0.10	0.28	27.61	NASDAQ 100	0.08	0.27	-0.06	0.22	35.87
NY unleaded gas	0.15	0.33	0.38	0.25	89.31	Nikkei 225	-0.01	0.21	0.08	0.27	71.04
Oats	-0.01	0.32	0.42	0.22	94.28	NYSE composite	0.05	0.14	0.19	0.14	100.00
Palladium	0.07	0.34	0.46	0.33	87.96	PSE technology	0.18	0.33	0.39	0.12	100.00
Platinum	0.04	0.22	0.57	0.17	100.00	Russell 2000	0.04	0.18	-0.05	0.40	48.04
RBOB gasoline	0.00	0.32	0.53	0.14	100.00	S&P 400 midcap	0.08	0.17	0.23	0.44	65.43
Rough rice	-0.10	0.27	0.05	0.37	52.53	S&P 500	0.06	0.15	-0.07	0.30	37.37
Silver 1000 oz	-0.11	0.24	-0.48	0.19	0.00	VIX	-0.58	0.53	-0.16	0.28	11.81
Silver 500 oz	0.02	0.29	0.51	0.18	100.00						
Soyabean meal	0.12	0.28	0.33	0.26	86.53	<b>Panel D: Fixed Income (N=11)</b>					
Soyabean oil	-0.04	0.25	0.22	0.27	82.15	1-month Eurodollar	0.00	0.01	0.21	0.32	65.00
Soyabeans	0.05	0.25	0.29	0.26	83.16	30-day FED funds	0.00	0.01	0.15	0.38	63.64
Sugar number 11	-0.01	0.30	0.32	0.27	87.88	30-year U.S. T-bond	0.04	0.09	0.04	0.28	48.48
Sugar number 14	0.00	0.11	-0.77	0.00	0.00	3-month Eurodollar	0.00	0.01	0.11	0.38	56.57
Wheat (CBT)	-0.12	0.29	0.03	0.20	46.13	90-day U.S. T-bill	0.01	0.01	0.16	0.23	84.06
Wheat (KCBT)	-0.01	0.29	0.29	0.27	84.18	2-year U.S. T-note	0.01	0.02	0.04	0.18	62.29
Wheat (MGE)	0.03	0.28	0.23	0.40	66.89	5-year U.S. T-note	0.02	0.04	0.05	0.21	52.53
White wheat	-0.09	0.26	0.74	0.31	100.00	10-year agency note	0.08	0.08	-0.33	0.18	0.00
WTI crude oil	-0.12	0.31	0.26	0.15	100.00	10-year U.S. T-note	0.03	0.06	0.00	0.19	46.80
						Municipal bond index	0.04	0.07	0.21	0.33	63.10
						Ultra T-bond composite	0.06	0.12	-0.18	0.23	26.60

**Table 2. Speculative pressure risk premia: long-short portfolio analysis**

Panel A presents summary statistics for the excess returns of the long (L), short (S) and long-short (LS) portfolios based on speculative pressure per class of futures (commodity, currency, equity index and fixed income) and across classes (everywhere). Mean and StDev have been annualized. Newey-West h.a.c. robust *t*-statistics are reported in parentheses for the mean excess returns. Sharpe ratio is measured as Mean divided by StDev, Sortino ratio is calculated as Mean divided by annualized downside deviation and Omega ratio is measured as the probability weighted ratio of gains versus losses (the latter two ratios use 0% as threshold). CER is the certainty equivalent return that an investor with power utility preferences is willing to accept instead of engaging in the SP strategy. Panel B presents correlations between the long-short SP risk premia alongside *p*-values for the null of zero correlation in curly brackets. The sample period is October 1993 to May 2018 for the class-specific futures and October 1998 to May 2018 for the everywhere portfolio.

	Commodity			Currency			Equity index			Fixed income			Everywhere		
	L	S	LS	L	S	LS	L	S	LS	L	S	LS	L	S	LS
<b>Panel A: Summary statistics</b>															
Mean	0.0247 (0.68)	-0.0577 (-1.61)	0.0412 (2.62)	0.0260 (1.22)	-0.0242 (-1.35)	0.0251 (2.45)	0.0529 (1.59)	-0.0277 (-0.72)	0.0403 (2.29)	0.0108 (1.42)	0.0255 (2.22)	-0.0074 (-1.49)	0.0244 (1.25)	-0.0100 (-0.56)	0.0172 (2.57)
StDev	0.1520	0.1442	0.0673	0.1102	0.0800	0.0535	0.1554	0.1755	0.0805	0.0348	0.0577	0.0262	0.0801	0.0693	0.0314
Skewness	-0.3670 (-2.58)	-0.3312 (-2.33)	-0.1013 (-0.71)	-2.2044 (-15.48)	0.0262 (0.18)	-1.8077 (-12.70)	-0.6196 (-4.35)	-0.5097 (-3.58)	-0.1556 (-1.09)	-0.2985 (-2.10)	0.1920 (1.35)	-0.1721 (-1.21)	-0.8904 (-5.58)	-0.2506 (-1.57)	-0.4609 (-2.89)
Excess kurtosis	3.1978 (11.23)	2.1227 (7.45)	1.5172 (5.33)	16.2427 (57.04)	0.7994 (2.81)	16.4859 (57.90)	1.2954 (4.55)	1.2339 (4.33)	2.5833 (9.07)	4.2846 (15.05)	4.7036 (16.52)	5.7273 (20.11)	4.5767 (14.35)	2.4961 (7.83)	2.0399 (6.40)
99% VaR (Cornish-Fisher)	0.1424	0.1308	0.0500	0.1860	0.0596	0.0949	0.1275	0.1488	0.0672	0.0344	0.0523	0.0292	0.0848	0.0623	0.0263
% of positive months	0.5574	0.4831	0.5574	0.6014	0.4595	0.6115	0.5878	0.5000	0.5473	0.5507	0.5743	0.4459	0.5720	0.4746	0.6017
Maximum drawdown	-0.4762	-0.8334	-0.1677	-0.3223	-0.5678	-0.1642	-0.5460	-0.8504	-0.2167	-0.1095	-0.1031	-0.2130	-0.2705	-0.3884	-0.0779
Sharpe ratio	0.1624	-0.3999	0.6121	0.2362	-0.3026	0.4695	0.3406	-0.1580	0.5010	0.3103	0.4422	-0.2810	0.3041	-0.1439	0.5473
Sortino ratio	0.2174	-0.5779	0.9416	0.2390	-0.4685	0.5176	0.4489	-0.2171	0.7088	0.3857	0.6031	-0.3650	0.3663	-0.2051	0.7255
Omega ratio	1.1386	0.7384	1.5963	1.2304	0.7976	1.4916	1.2963	0.8871	1.5094	1.3215	1.4712	0.7783	1.2825	0.8943	1.5209
CER	-0.0368	-0.1152	0.0297	-0.0112	-0.0405	0.0174	-0.0116	-0.1133	0.0239	0.0077	0.0172	-0.0091	0.0075	-0.0222	0.0146
<b>Panel B: Correlation in the excess returns of the class-specific portfolios</b>															
Currency			-0.0094 {0.87}												
Equity index			0.0260 {0.66}			0.1687 {0.00}									
Fixed income			-0.0151 {0.80}			-0.0092 {0.87}			0.1660 {0.00}						

**Table 3. Do speculators outperform publicly-available rule-based strategies?**

This table reports the OLS coefficient estimates and Newey-West  $t$ -statistics from regressions of the excess returns of the long-short SP portfolio on AVG, Mom, Value and Carry where AVG is a long-only equally-weighted portfolio of the constituents of a given market, Mom, Value and Carry are long-short portfolios based on the corresponding momentum, value and carry signals. Adj- $R^2$  is the adjusted explanatory power statistic. The sample period is October 1993 to May 2018 for the class-specific futures, October 1998 to May 2018 for the everywhere portfolio.

	Commodity	Currency	Equity index	Fixed income	Everywhere
$\alpha$	0.0023 (1.84)	0.0008 (1.35)	0.0004 (0.43)	0.0000 (-0.08)	0.0008 (1.42)
$\beta_{AVG}$	0.0246 (0.67)	0.1012 (2.16)	-0.0196 (-0.53)	-0.2136 (-2.49)	0.1069 (1.74)
$\beta_{Mom}$	0.2910 (5.09)	0.3128 (4.48)	0.2382 (6.29)	-0.0191 (-0.27)	0.1458 (2.92)
$\beta_{Value}$	-0.0716 (-1.35)	0.0832 (0.92)	0.0619 (1.17)	-0.2021 (-2.03)	-0.1211 (-1.61)
$\beta_{Carry}$	0.0412 (0.99)	0.2323 (3.77)	0.0287 (0.92)	-0.3324 (-2.71)	0.1283 (1.99)
Adj- $R^2$	0.26	0.36	0.42	0.39	0.15



**Table 4. Does a common factor structure explain the SP risk premia?**

Panel A reports the percentage of total variation in the excess returns of the four class-specific SP portfolios that each principal component (PC) explains. Panel B reports the OLS coefficient estimates and Newey-West  $t$ -statistics from regressions of the SP excess returns on business cycle variables (change in industrial production, IP; default spread, DS; term spread, TS; Kilian's global real economic activity index), market liquidity shocks ( $L$ ), funding liquidity shocks (TED) and volatility shocks ( $v$ ). Adj- $R^2$  is the adjusted explanatory power. The sample period is October 1993 to May 2018.

<b>Panel A: Principal component analysis</b>				
	1st PC	2nd PC	3rd PC	4th PC
Variance explained	30.81%	25.29%	25.04%	18.87%
<b>Panel B: Macroeconomic, liquidity and volatility risks</b>				
	Commodity	Currency	Equity index	Fixed income
$\alpha$	-0.0005 (-0.12)	0.0072 (2.38)	-0.0125 (-2.66)	0.0030 (2.11)
$\theta_{IP}$	-0.0903 (-0.31)	-0.1057 (-0.73)	0.2208 (1.05)	-0.0009 (-0.01)
$\theta_{DS}$	0.0042 (1.22)	-0.0028 (-1.33)	0.0097 (2.72)	-0.0028 (-2.53)
$\theta_{TS}$	-0.0012 (-0.84)	-0.0005 (-0.53)	0.0008 (0.69)	0.0003 (0.85)
$\theta_{Kilian}$	0.0000 (1.39)	0.0000 (0.22)	0.0000 (-1.05)	0.0000 (-1.37)
$\theta_L$	0.0001 (0.49)	0.0002 (1.81)	0.0004 (1.49)	0.0001 (1.23)
$\theta_{TED}$	-0.0070 (-0.77)	-0.0055 (-1.48)	0.0091 (1.99)	0.0004 (0.27)
$\theta_v$	-0.1058 (-1.56)	-0.2103 (-2.21)	-0.6488 (-4.15)	0.0181 (0.45)
Adj- $R^2$	0.00	0.05	0.15	0.00

**Table 5. Cross-sectional pricing ability of the speculative pressure risk factors**

This table reports the average price ( $\lambda$ ) and Shanken-corrected  $t$ -statistics in parentheses for the risk factors. The pricing ability of the class-specific and ‘everywhere’ speculative pressure (SP) risk factors is tested individually (column 1 of each panel), jointly with the corresponding AVG, Mom, Value and Carry risk factors (column 2 of each panel), and jointly with business cycle variables such as the change in industrial production, IP, the default spread, DS, the term spread, TS, the Kilian’s index of global real economic activity, market liquidity shocks,  $L$ , funding liquidity shocks, TED, and volatility shocks,  $v$  (column 3 of each panel). The test assets are the 84 individual futures contracts throughout.  $\text{Adj-}R^2$  ( $\Delta \text{adj-}R^2$ ) is the explanatory power (incremental explanatory power) of the SP risk factor. The sample period is October 1993 to May 2018 for the class-specific futures and October 1998 to May 2018 for the everywhere portfolio.

	Commodity			Currency			Equity index			Fixed income			Everywhere		
$\lambda_0$	-0.0004 (-0.30)	-0.0006 (-0.69)	-0.0014 (-1.31)	-0.0015 (-1.32)	-0.0016 (-1.66)	-0.0016 (-1.67)	-0.0008 (-0.62)	-0.0016 (-1.67)	-0.0015 (-1.54)	0.0000 (0.01)	0.0000 (-0.03)	-0.0012 (-1.24)	-0.0016 (-1.22)	-0.0011 (-1.08)	-0.0015 (-1.43)
$\lambda_{SP}$	0.0052 (2.32)	0.0050 (2.18)	0.0062 (2.17)	0.0038 (2.57)	0.0048 (2.76)	0.0036 (1.92)	0.0049 (2.14)	0.0055 (2.34)	0.0050 (1.71)	0.0029 (2.32)	0.0005 (0.47)	0.0009 (0.80)	0.0031 (2.83)	0.0031 (2.44)	0.0042 (3.01)
$\lambda_{AVG}$		0.0015 (0.65)			0.0017 (0.95)			0.0049 (1.83)			-0.0009 (-0.95)			0.0000 (0.00)	
$\lambda_{Mom}$		0.0028 (0.60)			0.0019 (0.62)			0.0173 (2.21)			0.0007 (0.43)			0.0039 (1.53)	
$\lambda_{Value}$		-0.0035 (-0.98)			0.0002 (0.11)			-0.0048 (-0.79)			0.0001 (0.07)			0.0004 (0.26)	
$\lambda_{Carry}$		-0.0030 (-0.55)			0.0032 (1.12)			0.0050 (0.52)			0.0002 (0.18)			0.0041 (2.06)	
$\lambda_{IP}$			-0.0016 (-1.23)			-0.0025 (-2.07)			-0.0028 (-2.26)			-0.0024 (-1.94)			-0.0010 (-0.79)
$\lambda_{DS}$			0.1646 (1.97)			0.1929 (2.51)			0.1250 (1.63)			0.1697 (2.24)			0.0469 (0.55)
$\lambda_{TS}$			0.2981 (1.49)			0.2479 (1.26)			0.2003 (1.06)			0.2844 (1.47)			0.0540 (0.20)
$\lambda_{Kilian}$			-16.4343 (-1.11)			-6.0556 (-0.45)			0.1156 (0.01)			-3.5666 (-0.27)			-11.1081 (-0.85)
$\lambda_L$			3.0490 (2.14)			2.3481 (1.81)			2.3152 (1.71)			2.2416 (1.61)			2.1911 (1.48)
$\lambda_{TED}$			0.0375 (0.84)			-0.0271 (-0.65)			-0.0305 (-0.74)			-0.0379 (-0.94)			0.0331 (0.83)
$\lambda_v$			-0.0028 (-1.55)			-0.0014 (-0.79)			-0.0014 (-0.81)			-0.0017 (-1.04)			-0.0020 (-1.05)
Adj- $R^2$	0.05	0.24	0.25	0.07	0.17	0.23	0.06	0.18	0.24	0.06	0.17	0.23	0.07	0.20	0.23
$\Delta \text{adj-}R^2$		0.04	0.03		0.03	0.01		0.01	0.02		0.02	0.01		0.04	0.01

**Table 6.** Commitments of Traders reports

The table reports robustness tests for the long-short portfolios (Panel A) and cross-sectional pricing (Panel B) as regards the definition of the speculative pressure signal. The alternative signals are based on *i*) hedging pressure or the standardized net positions of commercial traders as reported in the Futures-Only Legacy COT report, *ii*) the standardized net positions of non-commercial traders as reported in the Futures and Options Legacy COT report, or *iii*) the standardized net positions of managed money managers and levered fund managers as reported the Disaggregated COT and TFF reports. Mean is the annualized mean excess return. Sharpe ratio is the Mean divided by annualized standard deviation, Sortino ratio is the Mean divided by annualized downside deviation and Omega ratio is the probability weighted ratio of gains versus losses; the latter two ratios use a 0% threshold. CER is the certainty equivalent return that an investor with power utility preferences is willing to accept instead of engaging in a given strategy.  $\alpha$  and  $\beta$  are the intercept and slope coefficient estimated from a regression of the excess returns of a given alternative SP portfolio on the excess returns of the corresponding baseline SP portfolio. Adj- $R^2$  is the corresponding adjusted-goodness of fit statistics.  $\lambda_{SP}$  is the average price of SP risk as estimated within an augmented pricing model that also includes off-the-shelf risk factors.  $\Delta adj - R^2$  denotes the incremental explanatory power of the SP risk factor. The  $t$ -statistics in parentheses are Newey-West corrected in Panel A and Shanken corrected in Panel B. The sample period for the class-specific portfolios starts October 1993 for the hedging pressure signal based on the Futures-Only Legacy COT report, March 1996 for the SP signal based on the Futures-and-Options Legacy COT report and June 2007 for the Disaggregated COT and TFF reports. The samples for the corresponding everywhere portfolios start 60 months later. All the samples end in May 2018.

	Hedging pressure					Combined futures and options COT report					Disaggregated COT and TFF reports				
	Comm.	Currency	Equity indices	Fixed income	Everywhere	Comm.	Currency	Equity indices	Fixed income	Everywhere	Comm.	Currency	Equity indices	Fixed income	Everywhere
<b>Panel A: Long-short portfolio results</b>															
Mean	0.0394 (2.52)	0.0219 (2.24)	0.0461 (2.14)	-0.0086 (-1.93)	0.0226 (3.17)	0.0490 (3.18)	0.0232 (2.19)	0.0388 (2.08)	-0.0074 (-1.36)	0.0205 (2.74)	0.0574 (2.29)	-0.0119 (-0.87)	0.1464 (3.82)	-0.0181 (-1.46)	0.0376 (3.69)
Sharpe ratio	0.5348	0.4655	0.4487	-0.3480	0.6108	0.7195	0.4294	0.4648	-0.2747	0.6305	0.7823	-0.2832	1.2768	-0.4456	1.4456
Sortino ratio	0.9833	0.6216	0.5873	-0.4433	0.7303	1.1545	0.4487	0.6616	-0.3532	0.7873	1.4100	-0.3704	2.1923	-0.5460	1.8066
Omega ratio	1.4846	1.4320	1.5066	0.7312	1.6778	1.7321	1.4515	1.4554	0.7806	1.6498	1.8246	0.8056	2.9015	0.6923	2.8977
CER	0.0259	0.0162	0.0179	-0.0102	0.0191	0.0372	0.0152	0.0212	-0.0093	0.0178	0.0439	-0.0165	0.1132	-0.0224	0.0357
$\alpha$	0.0007 (0.70)	0.0001 (0.37)	0.0002 (0.17)	-0.0002 (-1.00)	0.0006 (1.13)	0.0008 (1.58)	0.0000 (-0.37)	-0.0005 (-1.69)	-0.0001 (-1.07)	0.0000 (-0.02)	0.0005 (0.41)	-0.0013 (-2.20)	0.0061 (2.34)	-0.0008 (-1.07)	0.0020 (2.59)
$\beta$	0.7649 (11.43)	0.8100 (10.54)	1.0934 (9.82)	0.8170 (11.56)	0.9163 (9.33)	0.9078 (28.65)	1.0051 (61.04)	0.9833 (72.68)	0.9822 (78.65)	0.9993 (25.48)	0.9752 (16.77)	0.8403 (11.69)	0.8018 (18.80)	0.9322 (5.04)	0.6437 (4.53)
Adj- $R^2$	0.49	0.85	0.73	0.74	0.60	0.83	0.99	0.98	0.99	0.91	0.73	0.75	0.51	0.50	0.45
<b>Panel B: Cross-sectional pricing results</b>															
$\lambda_{SP}$	0.0042 (2.26)	0.0037 (2.45)	0.0078 (1.84)	-0.0003 (-0.26)	0.0032 (2.88)	0.0059 (2.45)	0.0051 (2.89)	0.0050 (1.99)	0.0010 (1.01)	0.0035 (2.78)	0.0064 (2.78)	0.0045 (3.01)	0.0103 (2.02)	0.0014 (1.07)	0.0030 (2.90)
$\Delta adj-R^2$	0.06	0.03	0.02	0.02	0.05	0.04	0.03	0.01	0.01	0.06	0.03	0.04	0.04	0.04	0.06

**Table 7.** Alternative portfolio construction techniques

The table reports robustness tests for the long-short portfolios (Panel A) and cross-sectional pricing (Panel B) as regards the use of terciles and asset weighting scheme. Mean is the annualized mean excess return. Sharpe ratio is the Mean divided by annualized standard deviation, Sortino ratio is the Mean divided by annualized downside deviation and Omega ratio is the probability weighted ratio of gains versus losses; the latter two ratios use a 0% threshold. CER is the certainty equivalent return that an investor with power utility preferences is willing to accept instead of engaging in a given strategy.  $\alpha$  and  $\beta$  are the intercept and slope coefficient estimated from a regression of the excess returns of a given alternative SP portfolio on the excess returns of the corresponding benchmark SP portfolio.  $\text{Adj-}R^2$  is the corresponding adjusted-goodness of fit statistics.  $\lambda_{SP}$  is the average price of SP risk as estimated within an augmented pricing model that also includes off-the-shelf risk factors.  $\Delta\text{adj} - R^2$  denotes the incremental explanatory power of the SP risk factor. The  $t$ -statistics in parentheses are Newey-West corrected in Panel A and Shanken corrected in Panel B. The sample period is October 1993 to May 2018 for the class-specific portfolios, and October 1998 to May 2018 for the everywhere portfolios.

Constituents Weights	Top and bottom terciles					100% of the available cross section														
	Standardized signal					Standardized ranking					Equal weighting					Risk parity weighting				
	Comm.	Currency	Equity indices	Fixed income	Every- where	Comm.	Currency	Equity indices	Fixed income	Every- where	Comm.	Currency	Equity indices	Fixed income	Every- where	Comm.	Currenc y	Equity indices	Fixed income	Every- where
<b>Panel A: Long-short portfolio results</b>																				
Mean	0.0441 (2.60)	0.0286 (2.51)	0.0424 (2.22)	-0.0069 (-1.30)	0.0188 (2.41)	0.0330 (2.20)	0.0248 (2.58)	0.0307 (1.93)	-0.0069 (-1.39)	0.0226 (3.17)	0.0278 (2.19)	0.0217 (2.72)	0.0160 (1.18)	-0.0059 (-1.30)	0.0097 (1.92)	0.0332 (2.16)	0.0184 (2.01)	0.0296 (2.06)	-0.0059 (-1.30)	0.0133 (2.07)
Sharpe ratio	0.6078	0.4674	0.4779	-0.2382	0.5268	0.5134	0.4833	0.4181	-0.2649	0.6108	0.4966	0.5285	0.2663	-0.2706	0.3931	0.4775	0.4094	0.4174	-0.2591	0.4510
Sortino ratio	0.9256	0.4882	0.6753	-0.3164	0.6771	0.7948	0.5206	0.5878	-0.3419	0.7303	0.7307	0.6355	0.3521	-0.3387	0.4683	0.8780	0.5232	0.6160	-0.3376	0.6470
Omega ratio	1.5924	1.5015	1.4782	0.8086	1.5107	1.4877	1.5116	1.4016	0.7871	1.6778	1.4716	1.5483	1.2381	0.7834	1.3627	1.4291	1.3744	1.4137	0.8018	1.4073
CER	0.0307	0.0180	0.0225	-0.0090	0.0156	0.0226	0.0177	0.0170	-0.0087	0.0191	0.0199	0.0173	0.0068	-0.0071	0.0081	0.0212	0.0132	0.0169	-0.0072	0.0111
$\alpha$	0.0000 (0.15)	0.0000 (0.11)	-0.0001 (-0.46)	0.0001 (1.12)	0.0000 (-0.15)	-0.0004 (-1.95)	0.0001 (0.52)	-0.0004 (-1.53)	0.0000 (0.34)	-0.0001 (-0.60)	-0.0002 (-0.47)	0.0003 (1.24)	-0.0008 (-1.33)	0.0000 (-0.08)	-0.0001 (-0.22)	0.0005 (0.50)	-0.0001 (-0.15)	0.0000 (0.00)	-0.0001 (-0.32)	0.0002 (0.47)
$\beta$	1.0613 (73.82)	1.1274 (29.73)	1.0870 (70.92)	1.0867 (28.03)	1.1140 (44.54)	0.9281 (46.28)	0.9399 (49.64)	0.8929 (42.33)	0.9849 (67.30)	0.9382 (26.39)	0.7353 (23.76)	0.7005 (23.19)	0.6331 (16.48)	0.7857 (20.32)	0.6098 (11.34)	0.6623 (8.74)	0.7573 (10.57)	0.7320 (13.89)	0.6591 (12.67)	0.6309 (7.94)
Adj- $R^2$	0.97	0.97	0.97	0.97	0.95	0.94	0.96	0.96	0.97	0.89	0.78	0.83	0.72	0.89	0.60	0.41	0.81	0.69	0.58	0.45
<b>Panel B: Cross-sectional pricing results</b>																				
$\lambda_{SP}$	0.0059 (2.25)	0.0057 (2.85)	0.0069 (2.42)	0.0004 (0.41)	0.0029 (2.29)	0.0039 (1.77)	0.0040 (2.27)	0.0055 (2.33)	0.0005 (0.50)	0.0026 (2.42)	0.0027 (1.39)	0.0027 (1.60)	0.0039 (2.08)	0.0007 (0.75)	0.0022 (2.22)	0.0036 (2.12)	0.0043 (2.72)	0.0059 (1.78)	0.0014 (1.20)	0.0040 (3.25)
$\Delta\text{adj-}R^2$	0.04	0.02	0.01	0.01	0.04	0.03	0.02	0.02	0.02	0.03	0.03	0.02	0.02	0.02	0.02	0.04	0.03	0.03	0.02	0.04

**Table 8.** Transaction costs analysis

The table reports for each long-short portfolio strategy the turnover measure, Equation (6), and the break-even round-trip transaction cost that makes the Sharpe ratio equal to zero, Equation (7). The sample period is October 1993 to May 2018 for the class-specific portfolios and October 1998 to May 2018 for the everywhere portfolios.

	Commodity	Currency	Equity index	Fixed income	Everywhere
<b>Panel A: Speculative pressure</b>					
Turnover	0.1465	0.1476	0.1439	0.1436	0.2303
Break-even TC (%)	2.351	1.423	2.344	-	0.538
<b>Panel B: Momentum</b>					
Turnover	0.3903	0.3716	0.3248	0.3463	0.4546
Break-even TC (%)	1.002	0.169	3.571	0.022	0.214
<b>Panel C: Value</b>					
Turnover	0.2474	0.1547	0.1130	0.1352	0.2450
Break-even TC (%)	0.805	1.595	0.000	0.048	0.405
<b>Panel C: Carry</b>					
Turnover	0.8022	0.1636	0.4795	0.3937	0.4901
Break-even TC (%)	0.500	1.932	2.893	0.174	0.573

**Table 9.** Liquidity of individual futures contracts

The table reports summary statistics for the portfolios implemented on the entire cross-sections (Panel A), and on the 90% (Panel B), and 80% most liquid futures contracts (Panel C) as signaled by the total open interest at the time of portfolio formation. Mean is the annualized mean excess return. Sharpe ratio is the Mean divided by annualized standard deviation, Sortino ratio is calculated as Mean divided by annualized downside deviation and Omega ratio is measured as the probability weighted ratio of gains versus losses (the latter two ratios use 0% as threshold). CER is the certainty equivalent return that an investor with power utility preferences is willing to accept instead of engaging in a given strategy. The sample period is October 1993 to May 2018 for the class-specific portfolios and October 1998 to May 2018 for the everywhere portfolios.

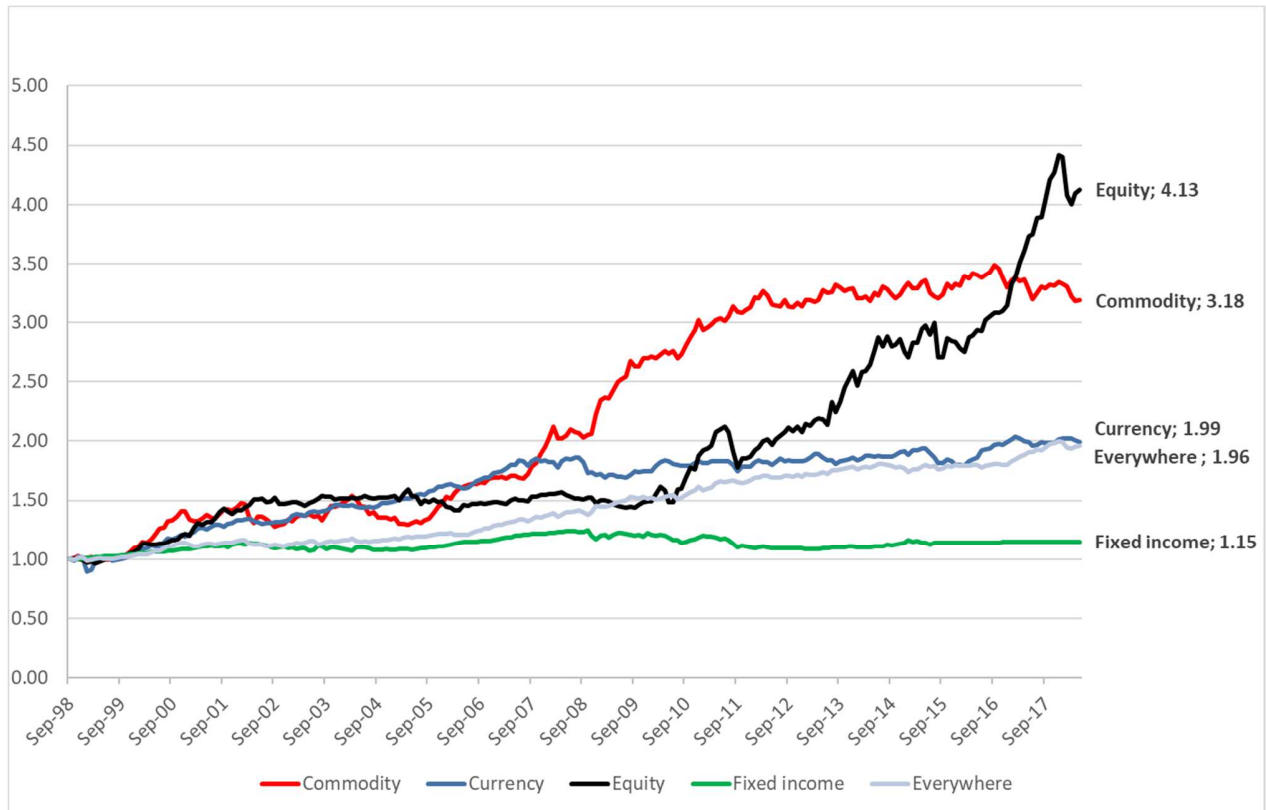
	Commodity	Currency	Equity index	Fixed income	Everywhere
<b>Panel A: Entire cross-section of futures</b>					
Mean	0.0412 (2.62)	0.0251 (2.45)	0.0403 (2.29)	-0.0074 (-1.49)	0.0172 (2.57)
Sharpe ratio	0.6121	0.4695	0.5010	-0.2810	0.5473
Sortino ratio	0.9416	0.5176	0.7088	-0.3650	0.7255
Omega ratio	1.5963	1.4916	1.5094	0.7783	1.5209
CER	0.0297	0.0174	0.0239	-0.0091	0.0146
<b>Panel B: 90% most liquid futures</b>					
Mean	0.0392 (2.37)	0.0255 (3.06)	0.0373 (1.91)	-0.0047 (-0.93)	0.0196 (3.06)
Sharpe ratio	0.5589	0.6024	0.4372	-0.1767	0.6523
Sortino ratio	0.8636	0.9198	0.6196	-0.2454	0.9309
Omega ratio	1.5252	1.5854	1.4388	0.8585	1.6563
CER	0.0267	0.0210	0.0189	-0.0064	0.0173
<b>Panel C: 80% most liquid futures</b>					
Mean	0.0426 (2.60)	0.0273 (3.40)	0.0417 (2.09)	-0.0039 (-0.78)	0.0209 (2.99)
Sharpe ratio	0.5841	0.6495	0.4745	-0.1491	0.6596
Sortino ratio	0.8407	0.9988	0.6695	-0.2059	0.9376
Omega ratio	1.5607	1.6484	1.5063	0.8792	1.7081
CER	0.0290	0.0228	0.0221	-0.0056	0.0183

**Table 10.** Sharpe ratios of speculative pressure portfolios in different sample periods

The table reports the Sharpe ratios over the full sample period (October 1993 to May 2018 for the futures class-specific portfolios, and October 1998 to May 2018 for the everywhere portfolio), and sub-periods thereof; high versus low volatility months according to GARCH models fitted to the class-specific and everywhere AVG returns, NBER-dated recession and expansion months, pre and post Dodd–Frank Wall Street Reform Act (July 2010), pre and post U.S. Quantitative Easing (December 2008), and non-overlapping 5-year windows.

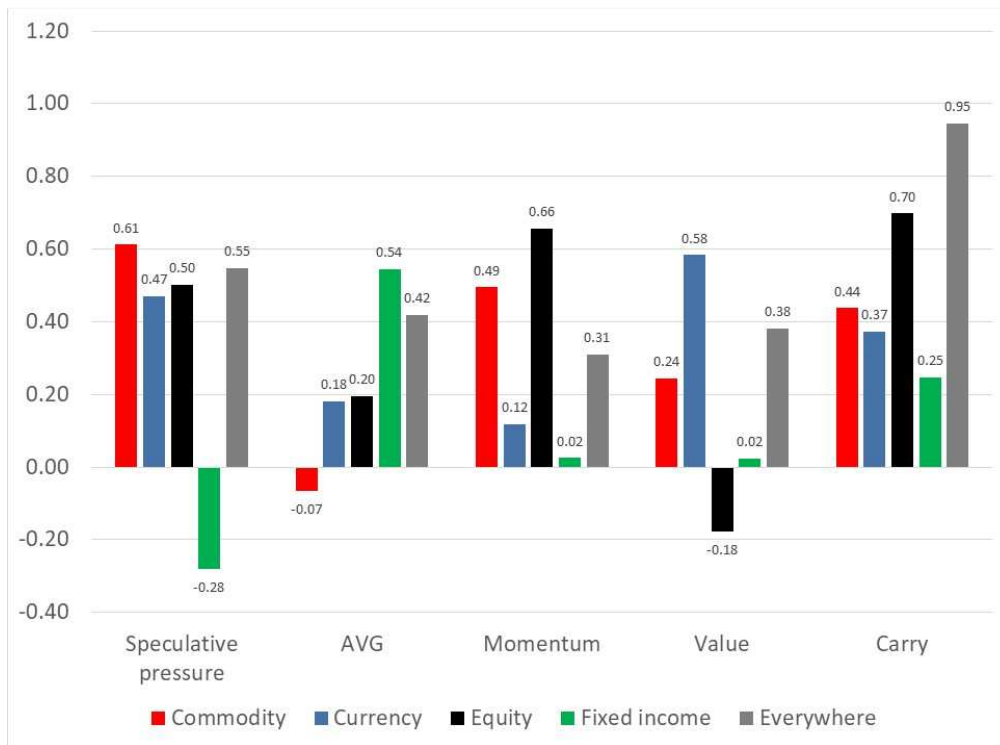
	Commodity	Currency	Equity indices	Fixed income	Everywhere
Full sample	0.6121	0.4695	0.5010	-0.2810	0.5473
High-volatility regime	0.9050	0.1496	0.8291	-0.3713	0.7323
Low-volatility regime	0.5042	0.7182	0.3604	-0.2401	0.4080
Recession regime	1.5150	-0.4109	-0.1512	-0.1215	0.8427
Expansion regime	0.4890	0.5638	0.5498	-0.3194	0.4976
Pre Dodd-Frank (July 2010)	0.7146	0.5379	-0.0701	-0.3395	0.2996
Post Dodd-Frank	0.3354	0.2811	1.1943	-0.1503	0.9432
Pre Quantitative Easing (Dec 2008)	0.5378	0.5352	-0.0515	-0.3468	0.0457
Post Quantitative Easing	0.7532	0.3391	1.0055	-0.2014	1.0709
31/10/1993 to 30/09/1998	0.5220	0.8734	-0.6139	0.2487	-
31/10/1998 to 30/09/2003	0.4249	0.4875	0.8878	-0.6614	-0.1924
31/10/2003 to 30/09/2008	0.6526	0.5419	-0.6603	-0.2707	0.3902
31/10/2008 to 30/09/2013	1.5037	0.0282	0.8494	-0.5321	1.2835
31/10/2013 to 31/05/2018	-0.1949	0.4021	1.1691	0.3132	0.6989

**Figure 1.** Future value of \$1 invested in long-short speculative pressure portfolios per class of futures (commodity, currency, equity index and fixed income) and across classes (everywhere portfolio)





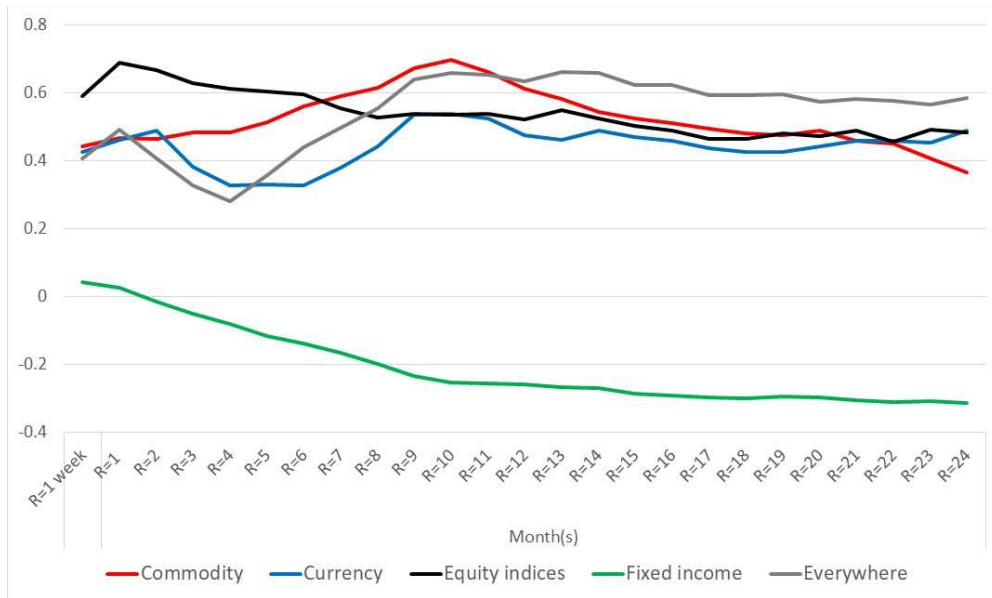
**Figure 2.** Sharpe ratios of long-only and long-short portfolios per class of futures (commodity, currency, equity index and fixed income) and across classes (everywhere portfolio)



**Figure 3.** Sharpe ratios of the SP portfolios over various ranking and holding periods

*Notes:* In panel A, we set the holding period ( $H$ ) to the baseline 1 month and change the ranking periods ( $R$ ). In panel B, we set the ranking period to the baseline 12 months and change the holding period. The common sample period is October 1994 to May 2018 for the class-specific portfolios and October 1999 to May 2018 for the everywhere portfolios.

Panel A. Sharpe ratios over various ranking periods



Panel B. Sharpe ratios over various holding periods

