



**HAL**  
open science

## Adaptive markets hypothesis for Islamic stock indices: Evidence from Dow Jones size and sector-indices

Amélie Charles, Olivier Darné, Jae Paul Kim

### ► To cite this version:

Amélie Charles, Olivier Darné, Jae Paul Kim. Adaptive markets hypothesis for Islamic stock indices: Evidence from Dow Jones size and sector-indices. *International Economics*, 2017, 151, pp.100-112. 10.1016/j.inteco.2017.05.002 . hal-01598139

**HAL Id: hal-01598139**

**<https://audencia.hal.science/hal-01598139>**

Submitted on 1 Mar 2019

**HAL** is a multi-disciplinary open access archive for the deposit and dissemination of scientific research documents, whether they are published or not. The documents may come from teaching and research institutions in France or abroad, or from public or private research centers.

L'archive ouverte pluridisciplinaire **HAL**, est destinée au dépôt et à la diffusion de documents scientifiques de niveau recherche, publiés ou non, émanant des établissements d'enseignement et de recherche français ou étrangers, des laboratoires publics ou privés.

**Adaptive Markets Hypothesis for Islamic  
Stock Indices: Evidence from Dow Jones  
Size and Sector-indices\***

**Amélie CHARLES<sup>†</sup>**

Audencia Business School

**Olivier DARNÉ<sup>‡</sup>**

LEMNA, University of Nantes

**Jae H. KIM<sup>§</sup>**

Department of Economics and Finance, La Trobe University

## Abstract

This paper analyzes the degree of return predictability (or weak-form informational efficiency) of Dow Jones Islamic and conventional size and sector-indices using the data from 1996 to 2013. Employing the automatic portmanteau and variance ratio tests for the martingale difference hypothesis of asset returns, we find that all Islamic and conventional sub-index returns have been predictable in a number of periods, consistent with the implications of the adaptive markets hypothesis. Overall, the Islamic sector-indices exhibit a higher degree of informational efficiency than the conventional ones, especially in the Consumer Goods, Consumer Services, Financials and Technology sectors. We also find that the Islamic sub-indices tend to be more efficient than the conventional ones during crisis periods.

*Keywords:* Islamic indices, Market Efficiency, Martingale difference hypothesis, Return predictability, Wild bootstrap.

*JEL Classification:* G01, G21, G28.

---

\*Olivier Darné gratefully acknowledge financial support from the Chaire Finance of the University of Nantes Research Foundation.

†Audencia Business School, 8 route de la Jonelire, 44312 Nantes, France. Email: acharles@audencia.com.

‡Corresponding authors: LEMNA, University of Nantes, IEMN-IAE, Chemin de la Censive du Tertre, BP 52231, 44322 Nantes, France. Email: olivier.darne@univ-nantes.fr.

§Department of Economics and Finance, La Trobe University, Australia. J.Kim@latrobe.edu.au

# 1 Introduction

One of the fundamental questions in economics and finance is whether prices of financial assets are predictable. The efficient market hypothesis (EMH) of Fama (1965) states that asset prices fully and instantaneously reflect all available and relevant information. Under the weak-form efficiency where the information set consists of past prices and returns, future prices and their returns are purely unpredictable based on past price information, and thus arbitrage opportunities are competed away; and asset prices follow a martingale process and its increments (returns) are characterized by a martingale difference sequence (MDS), where the returns are uncorrelated with past values.<sup>1</sup> Recent studies for the EMH on financial markets have tested whether asset returns follow a MDS (see, for example, Lim and Brooks, 2010; Kim et. al, 2011, Charles et al., 2011).

A number of studies examined the weak form of the EMH for the Islamic indices (Hassan, 2002; El Khalichi et al., 2014; Rizvi et al., 2014; Jawadi et al., 2015; Al-Khazali et al., 2016). However, these studies have not adopted time-varying measures of return predictability to evaluate the martingale difference hypothesis (MDH), except for the study of Sensoy et al. (2015) who implement a time-varying analysis with a rolling sample by applying the permutation entropy approach. In this paper, improved versions of the autocorrelation test (Ljung and Box, 1978) and variance ratio test (Lo and MacKinlay, 1988) statistics are adopted. That is, we use the wild bootstrap automatic variance ratio test of Kim (2009) and the automatic portmanteau test of Escanciano and Lobato (2009a). Notably, these tests are designed to test for the MDS property, being robust to non-normality and conditional heteroscedasticity that are typical features of stock returns (see, for details, Charles et al., 2011). Using a moving sub-sample window approach, we examine how the degree of return predictability or market (in)efficiency has evolved over time, depending on economic, political, and financial events. This time-varying re-

---

<sup>1</sup>See Escanciano and Lobato (2009b) for the details of martingale process or martingale difference.

turn predictability is consistent with the implications of the adaptive markets hypothesis (AMH) of Lo (2004), which is a modified version of the efficient market hypothesis of Fama (1970). An important implication of the AMH is that return predictability may arise time to time, due to changing market conditions (cycles, bubbles, crashes, crises, ...) and institutional factors. For the Islamic indices, Ho et al. (2014) and Jawadi et al. (2014) show that changing market conditions due to crisis periods, especially during the Global Financial Crisis, affect the performance of Islamic indices compared to their conventional counterparts. These events have strong implications for the psychology of market participants and the way they incorporate new information to prices, which in turn may generate time variation in serial correlation of returns.<sup>2</sup> Another implication of the AMH is that arbitrage opportunities do arise in the financial markets from time to time in the AMH, implying that strategies designed to exploit the arbitrage may decline for a time, and then return to profitability when environmental conditions become more conducive. Therefore, it is interesting to compare the conventional and Islamic indices in relation with the AMH. This study is the first one that evaluates the return predictability using time-varying measures in Islamic indices and their conventional counterparts, in close association with the AMH.

A range of alternative plausible explanations have been proposed in the literature to explain the difference of risk and performance between the Islamic and conventional indices. First, the relative under-diversification of the Islamic indices due to filtering criteria that remove a large number of Shari'ah non-compliant firms. The systematic exclusion of the largest firms from the broad universe of investable equities included in Islamic indices due to the financial ratios screen implies that the remaining Shari'ah compliant firms are

---

<sup>2</sup>Recent studies have found that changing market conditions, caused by the events such as Asian financial crisis (e.g., Kim and Shamsuddin, 2008; Lim et al., 2013), and the Global Financial Crisis (e.g., Kim et al., 2011; Smith, 2012), can affect the degree of market efficiency.

smaller (Hussein and Omran, 2005; Girard and Hassan, 2008; Saiti et al., 2014). Hussein and Omran (2005) and Girard and Hassan (2008) find that Islamic indices are small-cap oriented and conventional indices are relatively more mid-cap focused, whereas Charles et al. (2015) find that both conventional and Islamic indices are rather small-cap oriented. This difference could affect the return predictability of Islamic and conventional indices, as explained by Lo and Mackinlay (1988). That is, since small-cap firms are traded less frequently than large-cap ones, information would be promptly acted on the prices of large-cap firms and then small-cap firms with a lag, and thus could affect the predictability of size indices. Second, as a result, Shari'ah compliant firms become less diversified and being concentrated in some specific sectors (Hussein and Omran, 2005). Therefore, lower leverage and less diversification are the main distinctive features of Islamic indices. Dewandaru et al. (2015) and Charles et al. (2015) find that DJ Islamic indices are concentrated in Health Care, Industrials, Oil & Gas, and Technology. The concentration of Islamic indices and their conventional counterparts in few sectors can lead difference in return predictability Islamic and conventional sector-indices, and thus suggesting interesting investment opportunities and diversification benefits (Dewandaru et al., 2015). Therefore, it is of particular interest to compare the Islamic and conventional size and sector sub-indices in the framework of return predictability. This study is the first one to analyze and compare return predictability of Dow Jones Islamic and conventional size and sector-indices.

The main finding of the paper is that all Islamic (DJIM) and conventional (DJG) sub-index returns have been time-varying predictable, which is consistent with the implications of the AMH. We also find that some Islamic sector indices are found to be more efficient than the conventional ones. Finally, we do not observe a tendency that the Islamic sub-indices are more efficient during the crisis periods.

The remainder of this paper is organized as follows: Section 2 presents a brief literature review. Section 3 describes the tests for the MDH adopted in this paper; Section 4 reports the empirical results. The conclusion is drawn in Section 5.

## 2 Brief literature survey

There is a number of studies that examined the weak form of the EMH for the Islamic indices. Hassan (2002) examines the issues of market efficiency for the Dow Jones Islamic Market (DJIM) index from January 1996 through December 2000, using several statistical tests, such as serial correlation, variance ratio and Dickey-Fuller tests, and finds that DJIM has remarkable market efficiency. He suggests that the absence of professional speculators, liquidity and operational efficiency adversely affects the Islamic markets but it would certainly have a salutary impact on its allocative efficiency. He also shows that thin trading is one of characteristics of the DJIM, which can induce serial correlation in the time series of returns. El Khalichi et al. (2014) explore the weak-form efficiency level of Dow Jones, FTSE, MSCI and S&P500 Islamic indices by using the Lo-MacKinlay variance ratio tests. Their results show that Islamic indices have the same level of (in)efficiency as conventional ones, and the indices of MSCI and FTSE families are the less inefficient. Rizvi et al. (2014) compare the weak-form efficiency hypothesis between 11 Islamic countries' stock market indices and 11 developed markets' indices by using multifractal de-trended fluctuation analysis. They show that developed countries/regions have a relatively higher efficiency level in comparison to the Islamic countries, indicating the impact of the stage of market development on the efficiency of the market. Jawadi et al. (2015) investigate the weak-form informational efficient hypothesis for three major Dow Jones Islamic stock markets (World, Emerging, and Developed) over the period May 2002 to June 2012. Using rank, Box-Pierce autocorrelation, Lo-MacKinlay variance ratio and BDS tests, they find that emerging Islamic stock markets seem to be less

efficient than developed Islamic markets, suggesting interesting investment opportunities and diversification benefits from this region. Al-Khazali et al. (2016) examine the MDH and the random walk hypothesis for 18 conventional and Islamic stock indices (Asia-Pacific, Canadian, Developed Country, Emerging, European, Global, Japanese, UK, and US) over four sub-periods (bullish and bearish periods) from 1997 to 2012. They use the Escanciano and Lobato's (2009) automatic portmanteau test (AQ) and the Deo's (2000) test for the MDH, and the automatic variance ratio test (AVR) developed by Choi (1999) and Kim (2009) for the RWH. They find that three Islamic indices (Europe, Japan, and the UK) are not efficient. However, their findings about efficiency vary with the sub-period and the market state. For example, during the crisis period (2007-2012), their results indicate slightly more efficiency for the Islamic indices than their conventional counterparts. Overall, they find that the conventional indices are more efficient than their Islamic counterparts.

However, these studies did not use time-varying measures to evaluate the MDH, without link with the AMH, except the study of Sensoy et al. (2015) who implement a time-varying analysis with a rolling sample by applying the permutation entropy approach.<sup>3</sup> We note that the permutation entropy test is designed for the null hypothesis of independent stock returns, which can be too restrictive and unsuitable for stock returns with the MDS properties such as dependence in variance. In addition, the permutation entropy approach does not provide a sensible measure of return predictability. They find that all indices have different degrees of time-varying predictability and all conventional markets are found to be more efficient compared to their Islamic counter-parts at both country and continent levels from 1998 to 2014. However, in some of the cases, this difference in efficiency is almost indistinguishable. They show that efficiency in these markets depends mostly on liquidity, market quality, institutional characteristics and the

---

<sup>3</sup>Sensoy et al. (2015) also compare their results to those obtained from the Lo-MacKinlay variance ratio test, and find similar results.



country/continent specific investment behavior. They also show that the global financial crisis had an adverse effect on their market efficiency of both indices to varying extents.<sup>4</sup> However, these studies do not examine the predictability of Islamic and conventional indices for size and sectors sub-indices and during crisis periods, and the results vary with the sub-indices and the sub-periods.

Some studies explore the existence of diversification opportunities using cointegration methodology. Girard and Hassan (2008) and Kok et al. (2009) suggest to use Islamic and conventional indices as asset classes to have more diversification benefits. Kok et al. (2009) exhibit the existence of diversification opportunities by grouping Islamic with conventional and socially responsible indices on the UK market. Majid and Kassim (2010) find that the investors can gain benefits by diversifying in the Islamic stock markets across economic groupings such as that in the developed and developing countries, but limited benefits within the same economic groupings. El Khalichi et al. (2014) show diversification opportunities for Dow Jones and Standard & Poor's Islamic indices (market-capitalization based Shariah screening requirements), but not for FTSE and MSCI Islamic indices (asset-based Shariah screening requirements). Jawadi et al. (2015) find interesting investment opportunities and diversification benefits from emerging Islamic stock markets than from developed Islamic markets.

### 3 Methodology

We apply the automatic portmanteau test of Escanciano and Lobato (2009a) and automatic variance ratio test of Kim (2009), to evaluate market efficiency or return

---

<sup>4</sup>Note that Sensoy et al. (2015) study only the Global Financial crisis period and not the other crisis periods, especially the pre-crisis period from December 1998 to November 2007 (including the Dotcom crisis period) and the post-crisis from July 2009 to June 2014 (including the European Sovereign Debt crisis period).

predictability in this study. The portmanteau test (Ljung and Box, 1978) and variance ratio test (Lo and MacKinlay, 1988) have been widely used in empirical finance as a means of evaluating asset return predictability. However, they are well-known to suffer from deficient properties in small samples, especially under conditional heteroskedasticity widely observed in financial data. In addition, they require *ad hoc* choices of the lag length or holding periods, further undermining their small sample properties. There have been a number of recent contributions to these tests, which attempt to improve their small sample properties under conditional heteroskedasticity: see, for example, Lobato et al. (2001) for the modified portmanteau test and Kim (2006) for the wild bootstrap variance ratio tests.

To overcome the problem of choosing the lag length or holding period in an *ad hoc* way, Escanciano and Lobato (2009a) propose an automatic portmanteau (AQ) test where selection of lag length is made fully automatic based on a fully data-dependent procedure; and Kim (2009) proposes the use of an automatic variance ratio (AVR) test where the optimal holding period is automatically chosen. In their Monte Carlo study, Charles et al. (2011) report that the AVR and AQ tests show highly desirable small sample (size and power) properties, under a wide range of conditionally heteroskedastic asset returns. We note that these two tests are designed to test for the MDS property of asset returns, unlike the permutation entropy test employed by Sensoy et al. (2015) which tests for the iid (independently and identically distributed) property. It is well-known that a test for iid property may suffer from serious size distortion when the underlying time series follows an MDS (see, for example, Lo and Mackinlay, 1989; and Wright; 2000).

### **3.1 Automatic portmanteau test**

Let  $Y_t$  denote asset return at time  $t$ , where  $t = 1, \dots, T$ . Under the null hypothesis of no asset return predictability,  $Y_t$  is a strictly stationary and ergodic martingale difference

sequence (MDS) with appropriate moment conditions (see Escanciano and Lobato, 2009a; Assumption A1). The original portmanteau test statistic is written as

$$Q_p = T \sum_{i=1}^p \hat{\rho}^2(i), \quad (1)$$

where  $\hat{\rho}(i)$  is the sample estimator for  $\rho(i)$  which is the population autocorrelation of  $Y_t$  of order  $i$ . When  $Y_t$  shows conditional heteroscedasticity, Lobato et al. (2001) propose the use of a robustified test statistic of the form

$$Q_p^* = T \sum_{i=1}^p \tilde{\rho}^2(i), \quad (2)$$

where  $\tilde{\rho}(i) = \hat{\gamma}^2(i)/\hat{\tau}(j)$ ,  $\hat{\gamma}(i)$  is the sample autocovariance of  $Y_t$  of order  $i$ , and  $\hat{\tau}(i)$  is the sample autocovariance of  $Y_t^2$  of order  $i$ .

The choice of  $p$  should be made to implement the test. In order to avoid an *ad hoc* selection, Escanciano and Lobato (2009a) propose an automatic test  $AQ$  where the optimal value of  $p$  is determined by a fully data-dependent procedure. Under the null hypothesis of MDS where  $\rho(i) = 0$  for all  $i$ , the test statistic asymptotically follows the  $\chi_1^2$  distribution. The null hypothesis of no return predictability is rejected at  $\alpha$  level of significance, if the  $AQ$  statistics is greater than its asymptomatic critical value  $\chi_{1,\alpha}^2$ , which is the  $100(1-\alpha)$ th percentile of the  $\chi_1^2$  distribution.

### 3.2 Automatic variance ratio test

Choi's (1999) AVR test is based on a variance ratio estimator related to the normalized spectral density estimator at zero frequency. Namely,

$$\widehat{VR}(k) = 1 + 2 \sum_{i=1}^{T-1} k(i/k) \hat{\rho}(i), \quad (3)$$

where

$$k(x) = \frac{25}{12\pi^2 x^2} \left[ \frac{\sin(6\pi x/5)}{6\pi x/5} - \cos(6\pi x/5) \right]$$

is the quadratic spectral kernel. Note that the estimator given in (4) is a weighted average of sample autocorrelations of  $Y_t$ . According to Choi (1999), under the null hypothesis that  $Y_t$  is an MDS,

$$AVR(k) = \sqrt{T/k}[\widehat{VR}(k) - 1]/\sqrt{2} \rightarrow_d \mathbf{N}(0, 1), \quad (4)$$

as  $T \rightarrow \infty$ ,  $k \rightarrow \infty$ , and  $T/k \rightarrow \infty$ . To implement the test, a choice for the value of lag truncation point  $k$  should be made, which is equivalent to the value of holding period in the time domain. Choi (1999) proposes a data-dependent method of choosing  $k$  optimally, following Andrews (1991), noting that this choice may exert an enormous impact on the variance ratio test. The  $AVR$  test statistic with the optimally chosen lag truncation point is denoted as  $AVR(k^*)$ .

To improve the small sample properties of the  $AVR$  test under conditional heteroskedasticity, Kim (2009) proposes wild bootstrapping of the test, which is conducted in three stages as follows:

1. Form a bootstrap sample of size  $T$  as  $Y_t^* = \eta_t Y_t$  ( $t = 1, \dots, T$ ) where  $\eta_t$  is a random variable with zero mean and unit variance;
2. Calculate  $AVR^*(k^*)$ , the  $AVR(k^*)$  statistic calculated from  $\{Y_t^*\}_{t=1}^T$ ;
3. Repeat 1 and 2  $B$  times, to produce the bootstrap distribution of the  $AVR$  statistic  $\{AVR^*(k^*; j)\}_{j=1}^B$ .

The test for  $H_0$  against the two-tailed alternative is conducted to using the  $p$ -value, which is estimated as the proportion of the absolute values of  $\{AVR^*(k^*; j)\}_{j=1}^B$  greater than the observed statistic  $AVR(k^*)$ . Alternatively, one may use the  $100(1 - 2\alpha)$  per

cent confidence interval under  $H_0$ , which can be written as  $[AVR^*(\alpha), AVR^*(1 - \alpha)]$ , where  $AVR^*(\alpha)$  denotes the  $\alpha^{th}$  percentile of  $\{AVR^*(k^*; j)\}_{j=1}^B$ . For  $\eta_t$ , we use the two point distribution proposed by Mammen (1993). The number of bootstrap replications  $B$  is set at 500 in this study, which is well-known to be sufficient for  $p$ -value calculation and the construction of bootstrap confidence interval.

### 3.3 Measuring the Degree of Return Predictability

The  $AQ$  and  $AVR(k^*)$  tests described above are used to evaluate statistical significance of return predictability, by testing if the population autocorrelation values are 0. However, evaluation of effect size is also important, which in this case represents the magnitude of the degree of return predictability. Note that the  $AQ$  and  $AVR(k^*)$  statistics can be used as natural measures of return predictability.<sup>5</sup> Since the  $AQ$  statistic is the sum of squared sample autocorrelations of  $Y_t$  to the optimal order (scaled by the sample size), a higher value of  $AQ$  statistic indicates a higher degree of return predictability. Similarly, the  $AVR(k^*)$  statistic is one plus a weighted sum of the autocorrelations to the optimal order, with positive and declining weights. The main difference between the  $AQ$  and  $AVR(k^*)$  statistics is that the former treats all sample autocorrelations to the optimal order with equal weights, while the latter provides higher weights to lower order sample autocorrelations.

## 4 Empirical Results

### 4.1 Data Details

For the purpose of our analysis on any Shari'ah screening criteria effect on the predictability, we consider the daily data of the Dow Jones Islamic Market (DJIM) index

---

<sup>5</sup>Griffin et al. (2010) use the absolute value of  $VR(k) - 1$  as a measure of return predictability.

and the Dow Jones Global (DJG) index, spanning January 1<sup>st</sup>, 1996 to March 15<sup>th</sup>, 2013 (3,653 observations).<sup>6</sup> We chose these Islamic and conventional indices because the corresponding size and sector-indices are available on a long period including major crises, namely Asian Financial crisis, Dotcom crisis, Global Financial crisis and European Sovereign Debt crisis, which have a strong impact on the psychology of the markets for all financial assets. We study (1) the corresponding sub-indices based on size (proxied by the free float-adjusted market capitalization) and classified into three categories: large-, mid- and small-caps; and (2) the corresponding sector-indices and classified according to the Industry Classification Benchmark into ten categories: Basic Materials, Consumer Goods, Consumer Services, Financials, Health Care, Industrials, Oil and Gas, Technology, Telecommunications, and Utilities. The daily returns are computed as the natural logarithmic first difference of the daily closing prices, which are obtained from Datastream Thomson. The logarithmic stock returns are multiplied by 100 to avoid convergence problems.

Table 1 presents the descriptive statistics for the log-returns of sector and size-indices. We show that filtering criteria remove a large number of Shari'ah non-compliant firms, reducing the number of stocks included in the DJIM indexes by 60-70%. The Islamic sub-indices display higher mean returns than the conventional ones but they are also slightly more volatile, as also noted by Charles et al. (2015). All the returns are clearly non-normal, showing evidence of negative excess skewness and excess kurtosis, except for the Technology sector displaying positive skewness. Note that the Financials and Utilities sectors of the DJIM have positive skewness whereas their counterpart of the DJG are negative, suggesting some difference in the behavior of the returns. The Lagrange Multiplier (LM) test for the presence of the ARCH effect indicates that the returns show strong conditional heteroscedasticity, which is a typical feature of financial returns at the

---

<sup>6</sup>See Hussein (2004) for a detailed discussion on the DJIM index.

daily frequency. The strong evidence of non-normality and conditional heteroskedasticity suggest that the AQ and AVR tests employed in this paper are well-suited for the data.

In order to examine how return predictability changes depending on the major crises, we define sub-periods according to the periods of (non)crises: (i) Asian Financial Crisis from June 1997 to January 1998; (ii) Dotcom Crisis (from March 2000 to October 2002; (iii) Global Financial Crisis (GFC) from July 2007 to June 2009; and (iv) European Sovereign Debt Crisis from December 2009 to December 2012.

## 4.2 Evaluating time-varying return predictability

To evaluate time-varying return predictability, we use moving sub-sample window of 2 years, which consists of approximately 520 daily observations. This sample size is large enough to ensure desirable size and power properties of the tests employed (see Charles et al., 2011). The 2-year window is also suitable to capture the effects of changing market conditions.<sup>7</sup> The first sub-sample window covers the period from January 1996 to December 1997. Then, the window moves forward by one month to cover the period of February 1996 to January 1998. The process continues to the end of data set. Throughout this process, we calculate the AQ and AVR statistics as measures of time-varying return predictability. In this way, the periods or episodes of high degree of return predictability (with statistical significance) is identified, which in turn are related to the corresponding events and shocks. Note that the use of moving sub-sample window approach is not intended for multiple testing in this paper, but adopted as a means of measuring the degree of return predictability over time. It is also an effective guard against data snooping bias (see Hsu and Kuan, 2006).

---

<sup>7</sup>We have also considered shorter window lengths (180 and 260 days), and we found that the results are not sensitive to the different choices of window length. The results are available upon request.

Figures 1-5 report the AQ statistics obtained from moving sub-sample windows, monthly from January 1998 to March 2013, for size and sector-indices. Note that the results from the AVR test are not reported for simplicity since we have found similar results.<sup>8</sup> The AQ statistics are plotted in black line for the Islamic index and in red line for the conventional index, and the horizontal line indicate the 5% asymptotic critical value of 3.89. The AQ value greater than the critical value indicates the rejection of the null hypothesis of MDH (no return predictability) at 5% level of significance, which is statistical evidence against weak-form efficiency. In addition, a higher value of the AQ statistic indicates a higher degree of return predictability, as discussed in the previous section.

Figure 1 reports the AQ statistics for all size indices. We observe extensive periods of return predictability where the MDH is rejected most of times, except for the periods of the Dotcom crisis (around 2004) and the GFC (around 2009). The evidence against no return predictability is stronger for the conventional index than Islamic index; and stronger for small-cap and medium-cap indices than large-cap index. For example, the median values of AQ statistic for medium-cap index are 11.39 and 13.22, respectively, for the Islamic and conventional sub-indices; while those for large-cap index are 7.88 and 9.64, respectively. This means that higher informational efficiency is associated with Islamic and large-cap index. There is also a strong tendency that the degree of return predictability decreases over time, for both Islamic and conventional sub-indices, implying that the markets have become more efficient since late 1990's. It can also be observed that the difference in the degree of the return predictability between the Islamic and conventional sub-indices gets smaller over time, and the degree of return predictability has become virtually identical after 2011.

---

<sup>8</sup>The AVR test results are available upon request.



Figures 2 to 5 report the AQ statistics for sector indices. The returns from the Basic Materials sector exhibit a high degree of return predictability for both Islamic and conventional sub-indices, while both sub-indices show similar pattern over time. For the Consumer Goods and Consumer Services sectors, both sub-indices show largely different patterns in return predictability. That is, the conventional sub-index shows much higher AQ statistics than the Islamic sub-index almost always, also showing much more extensive periods of return predictability. Similar observations can be made for the Financials sector, where the Islamic sub-index shows a substantially lower degree of return predictability than its conventional counterpart nearly all the time. For the Healthcare sector, the AQ statistic is virtually identical for the Islamic and conventional sub-indices, while their returns have been unpredictable for most of times, except for early 2000's. For the Industrials sector, both sub-indices have been showing similar pattern, but both sub-indices show strong return predictability over time. The Oil & Gas and Telecommunications sectors show the pattern of return predictability similar to that of the Healthcare sector, where both Islamic and conventional sub-indices exhibit similar degree of return predictability. For the Technology sector, the Islamic sub-index is found to be much more efficient than the conventional sub-index, while no strong difference in the pattern of return predictability is found for the Utilities sector.

When comparing return predictability across sectors we find that the Basic Materials and Industrials sectors display the highest degree of return predictability, suggesting that these sectors are less informational efficient than the other sectors, whereas the Consumer Services, Healthcare, Technology and Utilities exhibit the lowest degree of return predictability. Finally, we also find that the Consumer Goods, Financials and Oil & Gas sectors show strong return predictability.

The overall results indicate that all Islamic and conventional sub-index returns have

been predictable in a number of periods. This means that the Islamic and conventional markets often show departure from market efficiency from time to time, which is consistent with the implications of the AMH. However, overall, the Islamic sub-indices are found to be more efficient than the conventional indices, especially in the Consumer Goods, Consumer Services, Financials, and Technology Sectors.

### **4.3 Return predictability during crisis periods**

Given the observations made by the past studies that the Islamic indices outperform the conventional ones during crisis times, we now examine the degree of return predictability of Islamic and conventional sub-indices during the crisis periods, namely Asian Crisis, Dotcom Crisis, Global Financial Crisis (GFC) and European Sovereign Debt Crisis.

Table 2 displays the AQ and AVR test statistics and their  $p$ -values for the size indices. For all size indices, the null hypothesis of MDH (no return predictability) is rejected at 5% level of significance for both Islamic and conventional sub-indices during the Asian Financial, Dotcom and European Sovereign Debt crises, which is evidence against weak-form efficiency of both markets during these crisis periods. During the GFC, the null of MDH is rejected for the medium and small-cap indices, for both Islamic and conventional sub-indices. For the large-cap index, there is strong evidence of the weak-form efficiency during the GFC, especially for the Islamic sub-indices. However, there is also a strong tendency that both AQ and AVR test statistics are smaller for the Islamic sub-indices, especially for the large-cap index, suggesting that a higher degree of informational efficiency is associated with this Islamic sub-index during crisis periods.

The results of AQ and AVR tests for the sector indices are given in Tables 3 and 4. For the Basic Materials sector, the Islamic and conventional sub-indices show similar degree of return predictability: the null hypothesis of no return predictability is rejected for all crisis periods. For the Consumer Goods sector, the Islamic and conventional sub-indices

again show similar test outcomes: strong return predictability for the Asian and European crises, but otherwise for the Dotcom crisis and GFC. For the Consumer Services sector, the Islamic sub-index is found to be more efficient during the European crisis and the GFC, while there is a tendency that a lower predictability is associated with this Islamic sub-indices during other crisis periods. For the Financials sector, the Islamic sub-index is found to be more efficient only during the Asian crisis. For the Healthcare sector, the AQ and AVR tests deliver similar outcomes for both Islamic and conventional sub-indices, except for the Asian crisis where the AVR test show efficiency of this Islamic sub-index. For Industrials, Oil & Gas, Technologies, and Telecommunications sectors, the AQ and AVR tests provide the same inferential outcomes for the Islamic and conventional sub-indices. It is notable that both sub-indices are found to be efficient during the GFC for the Oil & Gas, Technologies, and Telecommunications sectors. For the Utilities sector, the Islamic sub-index is found to be clearly more efficient than the conventional one during the Asian crisis, while the two tests deliver similar outcomes for the other crises.

The overall result suggests that there is no tendency that the Islamic sub-indices have been showing a lower (or higher) degree of predictability during the crisis times, and the results vary with the sub-indices and the sub-periods. Al-Khazali et al. (2016) find that the Islamic indices are slightly more efficient than their conventional counterparts during the recent crisis period. However, this different result can be explained by the fact that their study covers 18 conventional and Islamic stock indices, and not (size and sector) sub-indices, and their crisis period (2007-2012) includes the European Sovereign Debt crisis period. It is also notable that both Islamic and conventional sub-indices show a high degree of informational efficiency during the GFC for some sectors (Healthcare, Oil & Gas, Technologies, Telecommunications, and Utilities).<sup>9</sup>

---

<sup>9</sup>We have also applied the AQ and AVR tests before and after the crises in order to see whether the crises can improve the level of market efficiency or not. The results do not show any pattern before and after the crises for the size and sector indices. The results are available upon request.

## 5 Conclusion

Financial assets that comply with the Islamic law is growing at a fast rate in the global financial markets, attracting a great deal of attention from both academic researchers and practitioners (see, for example, Abdelsalam and El-Komi; 2015). One of the fundamental questions not sufficiently answered in the extant literature is the degree of informational efficiency or return predictability of the Islamic indices. In this paper, we analyze the degree of informational efficiency of Islamic index, in association with Lo's (2004, 2005) adaptive markets hypothesis (AMH). The key questions include how the degree of return predictability evolves over time and whether the Islamic index shows a higher degree of informational efficiency than the conventional index. These questions are not fully and properly answered in the previous studies. To this end, we conduct an extensive analysis in this paper, using disaggregated data sets and adopting new econometric methods with desirable small sample properties.

This paper evaluates the return predictability of Dow Jones Islamic and conventional indices by testing for the martingale difference hypothesis (MDH), using the daily data from 1996 to 2013. We pay attention to the size and sector indices to reflect the nature of Islamic indices which have a tendency of small-cap and of selective industry concentration. We employ the automatic portmanteau test of Escanciano and Lobato (2009a) and automatic variance ratio test of Kim (2009). These tests are explicitly designed to test for the martingale difference property of asset returns and found to possess desirable size and power properties in small samples under non-normality and conditional heteroskedasticity (see Charles et al., 2011). These tests also provide a sensible measures of the degree of return predictability or informational efficiency.

We find that both Islamic and conventional sub-indices have been showing time-varying return predictability, which is consistent with the implications of the AMH. However, we find a strong tendency that the Islamic sub-indices exhibit more periods of

no return predictability than the conventional ones. In addition, while both Islamic and conventional sub-indices show a similar degree of market efficiency in Basic Materials, Industrials, Oil & Gas, Telecommunications and Health Care sectors, the Islamic sub-indices are found to exhibit a substantially higher degree of informational efficiency in the Consumer Goods, Consumer Services, Financials and Technologies sectors. Finally, we do not observe evidence that the Islamic sub-indices tend to be more efficient than the conventional ones during crisis periods, and the results vary with the sub-indices and the sub-periods.

## References

- [1] Abdelsalam, O., El-Komi, M., 2015. Islamic Finance: An Introduction. *Journal of Economic Behavior and Organization*, 103, S1-S3.
- [2] Al-Khazali, O., Guillaume, L., AlSayed, M., 2016. A Market efficiency comparison of Islamic and Non-Islamic stock indices. *Emerging Market Finance and Trade Journal*, 52, 7, 1587-1606.
- [3] Andrews, D.W.K., 1991. Heteroskedasticity and autocorrelation consistent covariance matrix estimation. *Econometrica*, 58, 817-858.
- [4] Charles, A., Darné, O., Kim, J.H., 2011. Small sample properties of alternative tests for martingale difference hypothesis. *Economics Letters*, 110, 151-154.
- [5] Charles, A., Darné, O., Pop, A., 2015. Risk and ethical investment: Empirical evidence from Dow Jones Islamic indices. *Research in International Business and Finance*, 35, 33-56.
- [6] Choi, I., 1999. Testing the random walk hypothesis for real exchange rates. *Journal of Applied Econometrics*, 14, 293-308.
- [7] De Lorenzo, Y.T., 2001. Shariah supervision of islamic mutual funds. Paper in Proceedings of Fifth Harvard University Forum on Islamic Finance, Harvard University.
- [8] Dewandarua, G., Bacha, O.I., Masih, A.M.M., Masih, R., 2015. Risk-return characteristics of Islamic equity indices: Multi-timescales analysis. *Journal of Multinational Financial Management*, 29, 115-138.

- [9] El Khalichi, A., Sarkar, K., Arouri, M., Teulon, F., 2014. Are Islamic equity indices more efficient than their conventional counterparts? Evidence from major global index families. *Journal of Applied Business Research*, 30, 1137-1150.
- [10] Escanciano, J.C., Lobato, I.N., 2009a. An automatic portmanteau test for serial correlation. *Journal of Econometrics*, 151, 140–149.
- [11] Escanciano, J.C., Lobato, I.N., 2009b. Testing the Martingale Hypothesis, in: Patterson, K., Mills, T.C. (Eds.), *Palgrave Hand-book of Econometrics*, Palgrave MacMillan, New York, pp. 972-1003.
- [12] Fama, E., 1965. The behaviour of stock market prices. *Journal of Business*, 38, 34-105.
- [13] Girard, E., Hassan, K.M., 2008. Is there a Cost to Faith-Based Investing? Evidence from FTSE Indices. *Journal of Investing*, 17, 112-121.
- [14] Griffin, J.M., Kelly, P.J., Nardari, F., 2010. Do market efficiency measures yield correct inferences? A comparison of developed and emerging markets. *Review of Financial Studies*, 23, 3225-3277.
- [15] Hassan, K.M., 2002. Risk, return and volatility of faith-based investing: The case of the Dow Jones Islamic index. *Proceedings of the Fifth Harvard University Forum on Islamic Finance*.
- [16] Hassan, K.M., Girard, E., 2011. Faith-based ethical investing: The case of Dow Jones Islamic indices. *Workin paper, Networks Financial Institute, Indiana State University*.
- [17] Ho, C.S.F., Rahman, N.A.A., Yusuf, N.H.M., Zamzamin, Z., 2014. Performance of global Islamic versus conventional share indices: International evidence. *Pacific-Basin Finance Journal*, 28, 110-121.

- [18] Hussein, A.K., 2004. Ethical investment: Empirical evidence from FTSE Islamic index. *Islamic Economic Studies*, 12, 21-40.
- [19] Hussein, K., Omran, M., 2005. Ethical investment revisited: Evidence from Dow Jones Islamic indices. *Journal of Investing*, 14, 105-124.
- [20] Jawadi, F., Jawadi, N., Cheffou, A.I., 2015. Are Islamic stock markets efficient? A time-series analysis. *Applied Economics*, 47, 1686-1697.
- [21] Jawadi, F., Jawadi, N., Louhichi, W., 2014. Conventional and Islamic stock price performance: An empirical investigation. *International Economics*, 137, 73-87.
- [22] Kim, J.H., 2006. Wild bootstrapping variance ratio tests. *Economics Letters*, 92, 38-43.
- [23] Kim, J.H., 2009. Automatic variance ratio test under conditional heteroskedasticity. *Finance Research Letters*, 3, 179-185.
- [24] Kim, J.H., Shamsuddin, A., 2008. Are Asian stock markets efficient? Evidence from new multiple variance ratio tests. *Journal of Empirical Finance*, 15, 518-532.
- [25] Kim, J.H., Lim, K.P., Shamsuddin, A., 2011. Stock return predictability and the adaptive markets hypothesis: Evidence from century long U.S. Data. *Journal of Empirical Finance*, 18, 868-879.
- [26] Kok, S., Giorgioni, G., Laws, J., 2009. Performance of Shariah-compliant indices in London and NY stock markets and their potential for diversification. *International Journal of Monetary Economics and Finance*, 2, 398-408.
- [27] Lim, K.P., Brooks, R.D., 2010. The evolution of stock market efficiency over time: A survey of the empirical literature. *Journal of Economic Surveys*, 24, 1-40.



- [28] Lim ,K.P., Luo, W., Kim, J.H., 2013. Are US stock index returns predictable? Evidence from automatic autocorrelation-based tests. *Applied Economics*, 45, 953-962.
- [29] Ljung, G.M., Box, G.E.P., 1978. On a measure of lack of fit in time series models. *Biometrika*, 65, 297-303.
- [30] Lo, A.W., 2004. The adaptive markets hypothesis: Market efficiency from an evolutionary perspective. *Journal of Portfolio Management*, 30, 15-29.
- [31] Lo, A.W., 2005. Reconciling efficient markets with behavioral finance: The adaptive markets hypothesis. *Journal of Investment Consulting*, 7, 21-44.
- [32] Lo, A.W., MacKinlay, A.C., 1988. Stock market prices do not follow random walk: Evidence from a simple specification test. *The Review of Financial Studies*, 1, 41-66.
- [33] Lo, A.W., MacKinlay, A.C., 1989. The size and power of the variance ratio test in finite samples: A Monte Carlo investigation. *Journal of Econometrics*, 40, 203-238.
- [34] Lobato, I.N., Nankervis, J.C., Savin, N.E. 2001. Testing for autocorrelation using a modified Box-Pierce Q test. *International Economic Review* 42, 187–205.
- [35] Majid, M.S.A., Kassim, S.H., 2010. Potential diversification benefits across global Islamic equity markets. *Journal of Economic Cooperation and Development*, 31, 103-126.
- [36] Mammen, E., 1993. Bootstrap and wild bootstrap for high dimensional linear models. *The Annals of Statistics*, 21, 255-285.
- [37] Rizvi, S.A.R., Dewandaru, G., Bacha, O.I., Masih, M., 2014. An analysis of stock market efficiency: Developed vs Islamic stock markets using MF-DFA. *Physica A*, 407, 86-99.

- [38] Saiti, B., Bacha, O.I., Masih, M., 2014. The diversification benefits from Islamic investment during the financial turmoil: The case for the US-based equity investors. *Borsa Istanbul Review*, 14, 196-211.
- [39] Samuelson, P.A., 1965. Proof that properly anticipated prices fluctuate randomly. *Industrial Management Review*, 6, 41-9.
- [40] Sensoy, A., Aras, G., Hacıhasanoğlu, E., 2015. Predictability dynamics of Islamic and conventional equity markets. *The North American Journal of Economics and Finance*, 31, 222-248.
- [41] Smith, G., 2012. The changing and relative efficiency of European emerging stock markets. *The European Journal of Finance*, 18, 689-708.
- [42] Wright, J.H., 2000, Alternative Variance-Ratio Tests Using Ranks and Signs, *Journal of Business & Economic Statistics*, 18, 1-9.
- [43] Zaher, T.S., Hassan, M.K., 2001. A comparative literature survey of Islamic finance and banking. *Financial Markets, Institutions & Instruments*, 10, 155-199.

Table 1: Summary statistics

	Index	$N$	Mean (%)	St. dev. (%)	Skewness	Kurtosis	JB	ARCH
<i>Size indices</i>								
Large caps	DJIM	550	0.021	1.058	-0.301*	10.02*	2761.9*	1292.4*
	DJG	1410	0.016	1.031	-0.321*	9.83*	2642.1*	1321.0*
Medium caps	DJIM	853	0.033	1.171	-0.408*	7.81*	1518.7*	1238.8*
	DJG	2386	0.025	1.007	-0.525*	9.68*	2279.2*	1386.3*
Small caps	DJIM	967	0.040	1.231	-0.404*	6.68*	1010.5*	1256.2*
	DJG	2775	0.025	1.051	-0.546*	8.54*	1688.0*	1217.2*
<i>Sector indices</i>								
Basic Materials	DJIM	375	0.026	1.370	-0.501*	11.22*	3088.2*	1500.9*
	DJG	667	0.018	1.299	-0.519*	11.64*	3278.7*	1564.2*
Consumer Goods	DJIM	255	0.022	0.854	-0.225*	9.78*	2677.5*	1026.9*
	DJG	346	0.022	0.811	-0.156*	10.86*	3308.1*	1055.1*
Consumer Services	DJIM	191	0.033	1.141	-0.132*	7.58*	1593.1*	603.1*
	DJG	778	0.021	1.009	-0.262*	7.71*	1583.9*	913.4*
Financials	DJIM	63	0.007	1.693	0.206*	16.39*	6361.7*	942.8*
	DJG	1310	0.008	1.271	-0.177*	12.27*	4071.2*	1109.6*
Health Care	DJIM	255	0.028	0.989	-0.215*	8.92*	2229.6*	810.3*
	DJG	346	0.027	0.961	-0.255*	9.50*	2501.7*	871.5*
Industrials	DJIM	576	0.022	1.145	-0.345*	8.39*	1847.4*	1184.7*
	DJG	1370	0.016	1.082	-0.407*	8.45*	1810.6*	1227.0*
Oil & Gas	DJIM	201	0.029	1.460	0.516*	12.07*	3511.8*	1423.4*
	DJG	353	0.029	1.417	-0.546*	9.78*	3833.4*	1530.1*
Technology	DJIM	334	0.023	1.712	0.088*	6.96*	1301.8*	694.6*
	DJG	525	0.022	1.616	0.045	6.96*	1311.2*	720.0*
Telecommunications	DJIM	64	0.019	1.179	-0.083*	7.62*	1627.9*	847.0*
	DJG	136	0.011	1.134	-0.114*	7.78*	1696.5*	990.9*
Utilities	DJIM	50	0.013	1.108	0.063	20.10*	8537.7*	1334.4*
	DJG	256	0.010	0.855	-0.176*	18.51*	7585.6*	1591.7*

Note: DJIM and DJG denote the Dow Jones Islamic Market index and the Dow Jones Global index, respectively. The data covers the period from January 1<sup>st</sup>, 1996 to March 15<sup>th</sup>, 2013 (3,653 observations). The sub-indices based on size are proxied by the free float-adjusted market capitalization, and the sector-indices are classified according to the Industry Classification Benchmark.  $N$  denotes the number of firms. The skewness and kurtosis statistics are standard-normally distributed under the null of normality distributed returns. JB denotes the Jarque-Bera test for non-normality following a  $\chi^2(2)$  distribution. ARCH indicates the Lagrange multiplier test for conditional heteroscedasticity with 10 lags following a  $\chi^2(10)$  distribution. \* indicates statistical significance at the 5% level.

Table 2: AQ and AVR statistics for size indices.

	AQ		AVR	
	Islamic	conventional	Islamic	conventional
<i>Large caps</i>				
Asian crisis	12.93* (0.00)	21.06* (0.00)	2.40* (0.01)	2.63* (0.00)
Dotcom crisis	4.62* (0.03)	7.74* (0.01)	1.66* (0.04)	1.57* (0.05)
European sovereign debt crisis	12.46* (0.00)	13.49* (0.00)	2.75* (0.00)	2.86* (0.00)
GFC	0.79 (0.37)	3.14** (0.08)	0.09 (0.87)	0.76 (0.39)
<i>Medium caps</i>				
Asian crisis	20.79* (0.00)	18.42* (0.00)	2.97* (0.00)	3.52* (0.00)
Dotcom crisis	8.69* (0.00)	8.36* (0.00)	1.64** (0.06)	1.26 (0.12)
European sovereign debt crisis	11.65* (0.00)	11.54* (0.00)	2.71* (0.01)	2.85* (0.00)
GFC	5.40* (0.02)	7.27* (0.01)	1.72** (0.08)	2.01* (0.04)
<i>Small caps</i>				
Asian crisis	25.29* (0.00)	20.07* (0.00)	4.31* (0.00)	4.52* (0.00)
Dotcom crisis	5.11* (0.02)	4.71* (0.03)	1.61** (0.08)	1.55 (0.14)
European sovereign debt crisis	9.72* (0.00)	9.30* (0.00)	3.04* (0.00)	3.17* (0.00)
GFC	7.66* (0.01)	7.51* (0.01)	2.41* (0.01)	2.47* (0.01)

Note: The table displays the AQ and AVR statistics with their  $p$ -values in brackets. \* and \*\* indicate statistical significance at 5% and 10% level.

Table 3: AQ and AVR statistics for sector indices.

	AQ		AVR	
	Islamic	conventional	Islamic	conventional
<i>Basic Materials</i>				
Asian crisis	8.43* (0.00)	8.04* (0.00)	2.10** (0.06)	3.93* (0.02)
Dotcom crisis	6.07* (0.01)	6.47* (0.01)	1.82* (0.05)	2.20* (0.02)
European sovereign debt crisis	27.5* (0.00)	29.7* (0.00)	3.90* (0.00)	4.02* (0.00)
GFC	12.1* (0.01)	12.0* (0.00)	2.44* (0.03)	2.31* (0.03)
<i>Consumer Goods</i>				
Asian crisis	10.1* (0.00)	8.34* (0.00)	1.99* (0.01)	1.43** (0.07)
Dotcom crisis	7.40* (0.01)	1.27 (0.26)	0.40 (0.70)	0.63 (0.53)
European sovereign debt crisis	9.26* (0.00)	22.3* (0.00)	2.34* (0.01)	2.54* (0.00)
GFC	2.48 (0.12)	7.10* (0.01)	0.50 (0.57)	1.12 (0.21)
<i>Consumer Services</i>				
Asian crisis	15.0* (0.00)	19.4* (0.00)	2.59* (0.01)	2.53* (0.00)
Dotcom crisis	6.70* (0.01)	9.31* (0.00)	1.89* (0.02)	2.36* (0.02)
European sovereign debt crisis	1.08 (0.30)	6.50* (0.01)	1.37 (0.16)	2.40* (0.02)
GFC	0.12 (0.72)	3.00** (0.08)	0.51 (0.52)	0.87 (0.31)
<i>Financials</i>				
Asian crisis	0.74 (0.39)	54.3* (0.00)	1.31 (0.39)	3.47* (0.00)
Dotcom crisis	5.76* (0.02)	3.34** (0.07)	2.84* (0.01)	0.94 (0.27)
European sovereign debt crisis	1.67 (0.20)	11.0* (0.00)	2.07** (0.06)	2.84* (0.00)
GFC	7.91* (0.00)	8.01* (0.00)	-3.38* (0.01)	2.12* (0.03)
<i>Health Care</i>				
Asian crisis	4.23* (0.04)	6.12* (0.01)	1.55 (0.55)	1.82* (0.04)
Dotcom crisis	22.4* (0.00)	22.0* (0.00)	-0.46 (0.60)	-0.30 (0.70)
European sovereign debt crisis	0.98 (0.32)	1.40 (0.24)	1.06 (0.22)	1.39 (0.16)
GFC	0.28 (0.60)	0.41 (0.52)	0.20 (0.81)	0.05 (0.91)

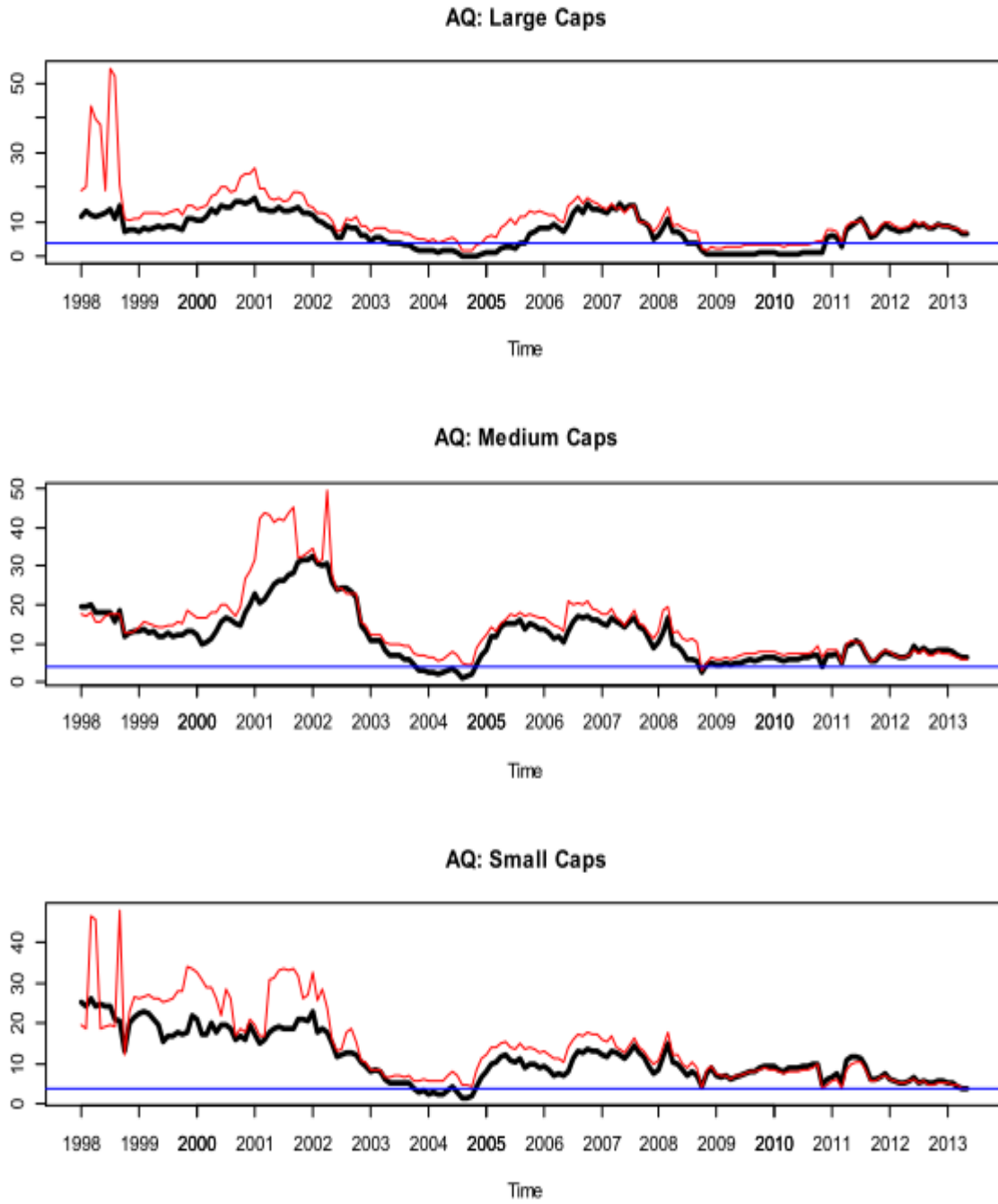
Note: The table displays the AQ and AVR statistics with their  $p$ -values in brackets. \* and \*\* indicate statistical significance at 5% and 10% level.

Table 4: AQ and AVR statistics for sector indices.

	AQ		AVR	
	Islamic	conventional	Islamic	conventional
<i>Industrials</i>				
Asian crisis	18.2* (0.00)	17.9* (0.00)	3.82* (0.00)	3.32* (0.00)
Dotcom crisis	10.2* (0.00)	12.3* (0.00)	2.26* (0.01)	2.32* (0.01)
European sovereign debt crisis	16.2* (0.00)	22.2* (0.00)	2.97* (0.00)	3.35* (0.00)
GFC	9.08* (0.00)	10.7* (0.00)	1.88** (0.05)	2.27* (0.03)
<i>Oil &amp; Gas</i>				
Asian crisis	54.6* (0.00)	51.8* (0.00)	2.16* (0.01)	2.64* (0.01)
Dotcom crisis	9.77* (0.00)	9.56* (0.00)	-0.14 (0.70)	-0.16 (0.69)
European sovereign debt crisis	9.45* (0.00)	11.0* (0.00)	2.73* (0.00)	2.93* (0.00)
GFC	0.01 (0.94)	0.07 (0.80)	0.08 (0.84)	0.64 (0.52)
<i>Technologies</i>				
Asian crisis	3.67* (0.05)	8.86* (0.00)	1.24 (0.14)	1.85** (0.06)
Dotcom crisis	0.39 (0.53)	1.36 (0.24)	0.65 (0.40)	1.18 (0.19)
European sovereign debt crisis	5.77* (0.02)	7.41* (0.00)	2.46* (0.01)	2.76* (0.00)
GFC	0.05 (0.83)	0.55 (0.47)	0.23 (0.69)	0.47 (0.53)
<i>Telecommunications</i>				
Asian crisis	12.3* (0.00)	14.5* (0.00)	2.35* (0.00)	2.82* (0.00)
Dotcom crisis	9.13* (0.00)	9.07* (0.00)	2.69* (0.00)	2.79* (0.00)
European sovereign debt crisis	4.23* (0.04)	4.47* (0.03)	1.64** (0.06)	2.79* (0.00)
GFC	0.89 (0.35)	0.57 (0.45)	0.28 (0.70)	0.31 (0.71)
<i>Utilities</i>				
Asian crisis	0.01 (0.94)	8.34* (0.01)	-0.03 (0.94)	2.06* (0.01)
Dotcom crisis	0.01 (0.91)	0.19 (0.66)	-0.14 (0.77)	0.39 (0.49)
European sovereign debt crisis	6.35* (0.01)	4.85* (0.03)	2.42* (0.01)	1.90* (0.03)
GFC	0.42 (0.52)	0.40 (0.53)	0.27 (0.75)	-0.23 (0.82)

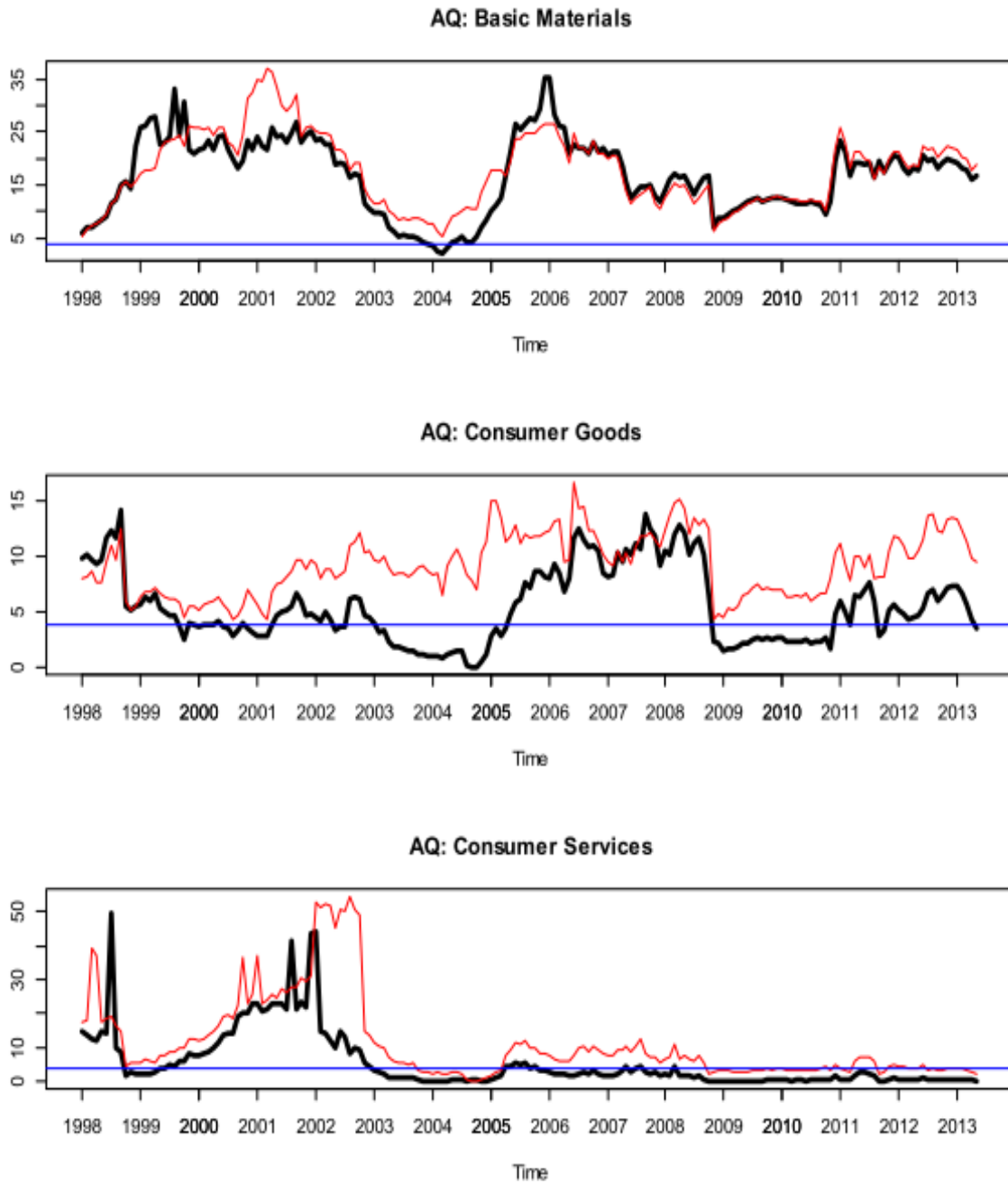
Note: The table displays the AQ and AVR statistics with their  $p$ -values in brackets. \* and \*\* indicate statistical significance at 5% and 10% level.

Figure 1: AQ statistics for size indexes.



Note: The AQ statistics are plotted in black line for the Islamic index and in red line for the conventional index, and the horizontal line indicate the 5% asymptotic critical value of 3.89.

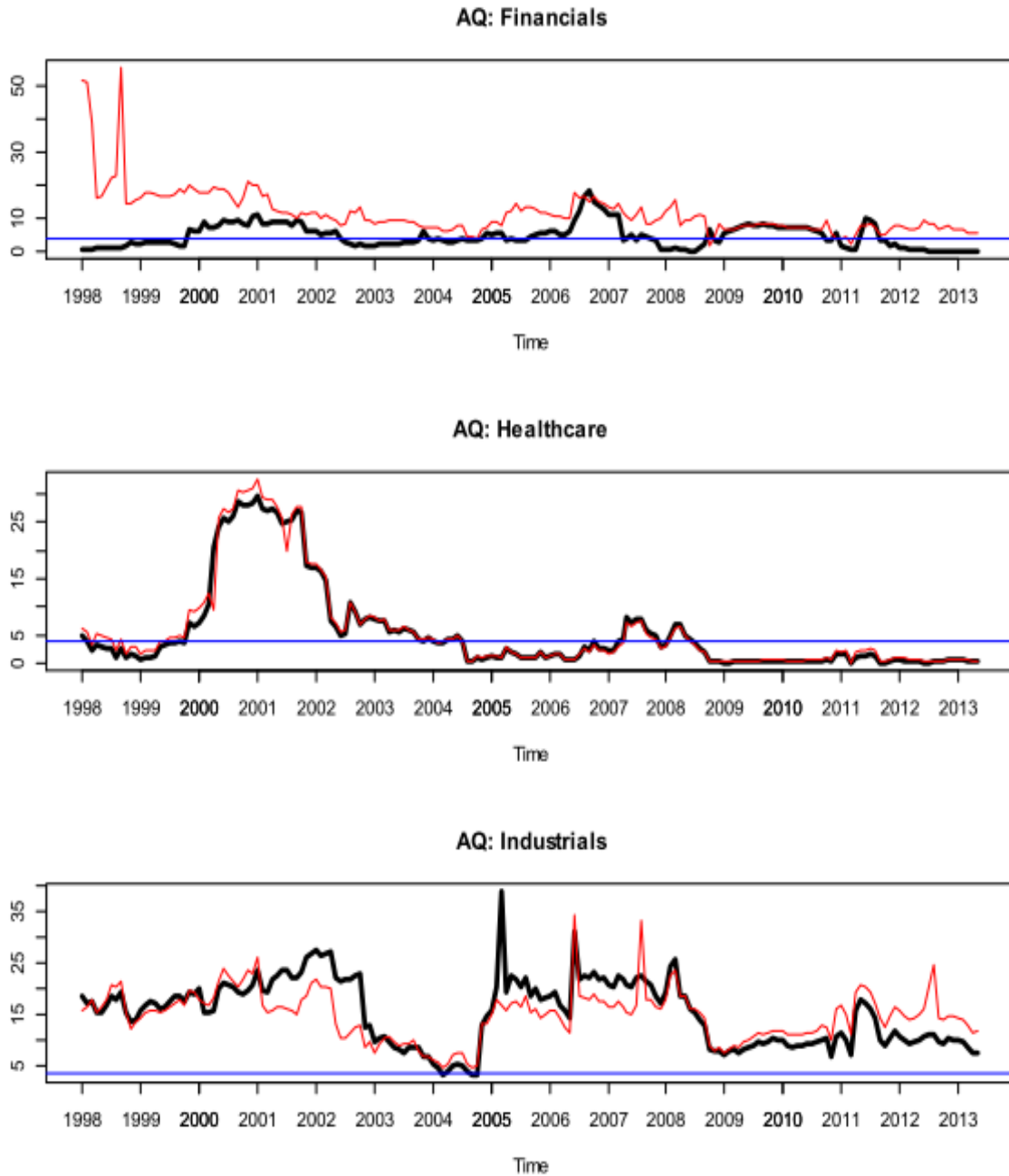
Figure 2: AQ statistics for sector indexes.



Note: The AQ statistics are plotted in black line for the Islamic index and in red line for the conventional index, and the horizontal line indicate the 5% asymptotic critical value of 3.89.

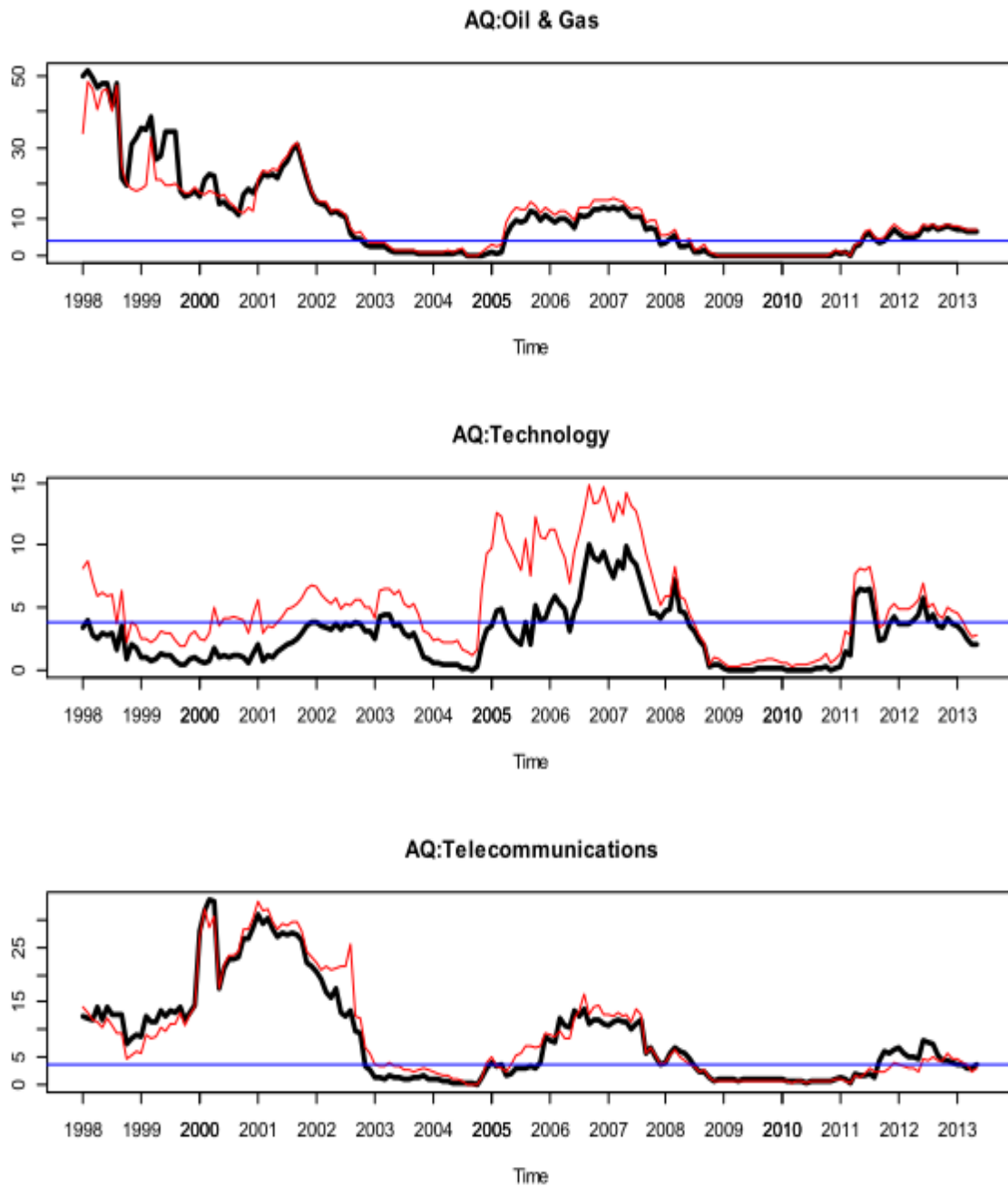


Figure 3: AQ statistics for sector indexes.



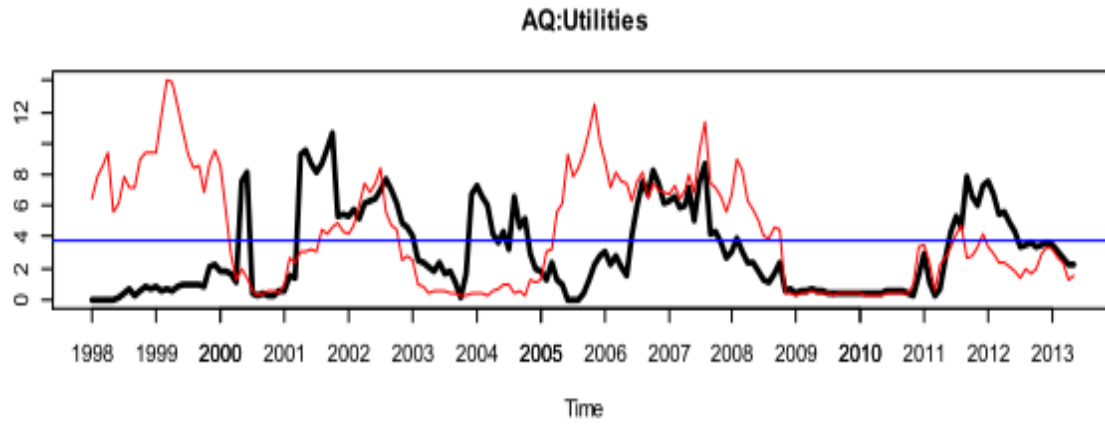
Note: The AQ statistics are plotted in black line for the Islamic index and in red line for the conventional index, and the horizontal line indicate the 5% asymptotic critical value of 3.89.

Figure 4: AQ statistics for sector indexes.



Note: The AQ statistics are plotted in black line for the Islamic index and in red line for the conventional index, and the horizontal line indicate the 5% asymptotic critical value of 3.89.

Figure 5: AQ statistics for sector indexes.



Note: The AQ statistics are plotted in black line for the Islamic index and in red line for the conventional index, and the horizontal line indicate the 5% asymptotic critical value of 3.89.